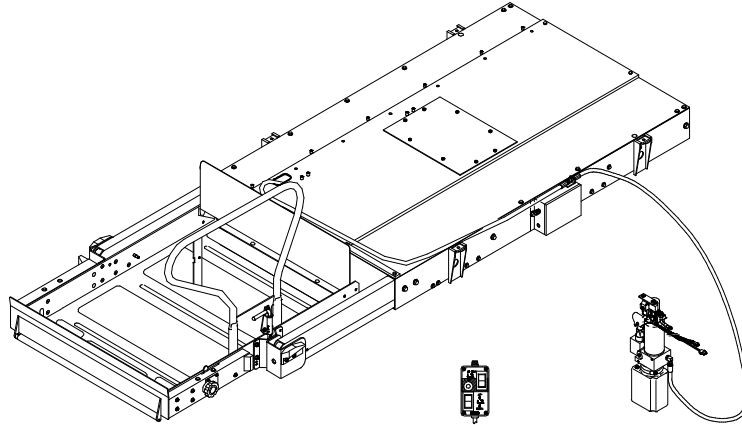


V. SPARE PARTS

This chapter contains parts diagrams and lists for the RICON Mirage F9B Series Export Use Wheelchair and Standee Lift. The parts diagrams are 3D exploded views of lift components, with individual components referenced by numbers. Each accompanying parts list contains the part reference number, description, quantity used, and the Ricon stock number. For parts identification, locate the part on the appropriate drawing and note the reference number. The parts list that accompanies each drawing will list the stock number of the desired part. For the part numbers of the lift decals, refer to Decal Locations and Part Numbers figure in Chapter II of this manual.



LIFT MODEL AND KIT NUMBERS	
PRODUCT NUMBER	F9B050-E340110 and F9B050-E340111
DOCUMENTATION KIT NUMBER	F9B-D000
PRODUCTION DECAL SET NUMBER	11746
SPARE DECAL KIT NUMBER	26023

PARTS DIAGRAM

PAGE

FIGURE 5-1: F9B SERIES MONARCH HYDRAULIC POWER UNIT..... 5-2

FIGURE 5-2: F9B PUMP ASSEMBLY..... 5-4

FIGURE 5-3: LIFT ENCLOSURE 5-6

FIGURE 5-4: PLATFORM ASSEMBLY 5-10

FIGURE 5-5: PLATFORM ASSEMBLY, RIGHT-SIDE DETAIL..... 5-11

FIGURE 5-6: PLATFORM ASSEMBLY, LEFT-SIDE DETAIL..... 5-12

FIGURE 5-7: CARRIAGE ASSEMBLY 5-16

FIGURE 5-8: TRAVELING FRAME ASSEMBLY..... 5-20

FIGURE 5-9: BRIDGEPLATE ASSEMBLY..... 5-22

FIGURE 5-10: HANDRAIL ASSEMBLY..... 5-24

APPENDIX 1: LIFT SPECIFICATIONS 5-26

MONARCH HYDRAULIC POWER UNIT
 F9B SERIES (ALL MODELS) WHEELCHAIR LIFT
 SERIAL NO's. 3692 - PRESENT

DATE: 03/08/00
DWG. F9BXX000
REV. A

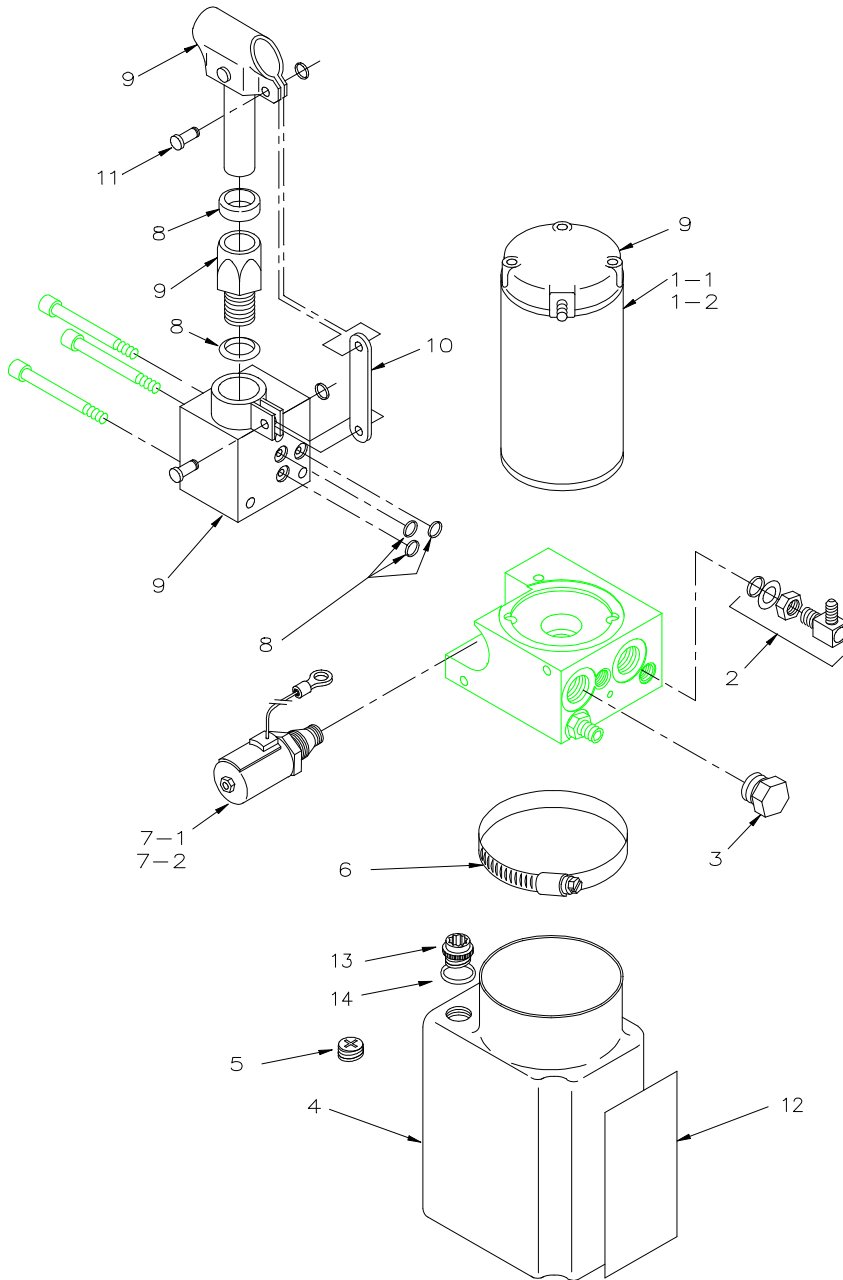


FIGURE 5-1: MONARCH HYDRAULIC POWER UNIT

**FIGURE 5-1: MONARCH HYDRAULIC POWER UNIT
F9B SERIES (ALL MODELS) WHEELCHAIR LIFT
SERIAL NO's. 3692 - PRESENT**

REF	DESCRIPTION	QTY	PART NO
1-1	MOTOR ASSY., 12V, 3" MONARCH PUMP	1	V2-SH-115
1-2	MOTOR ASSY., 24V, 3" MONARCH PUMP	1	V2-SH-116
2	FITTING, "L" 1/4 SAE O-RING BOSS 1/4" JIC	1	V2-SH-011
3	PLUG, 3/4-16 CAVITY, w/o-RING	2	V2-SH-001
4	RESERVOIR, RICON POWER UNIT, PLASTIC	1	V2-SH-108
5	PLUG, RESERVOIR, BREATHER FILLER	1	V2-SH-106
6	CLAMP HOSE	1	V2-SH-109
7-1	HYD. POPPET VALVE ASSY., 12V DELTROL	1	V2-SH-105
7-2	HYD. POPPET VALVE ASSY., 24V DELTROL	1	V2-SH-136
8	SEAL KIT, MANUAL BACK-UP PUMP.	1	V2-SH-220
9	BACK-UP PUMP, MANUAL w"out HANDLE	1	V2-SH-210
10	BRACKET, TENSION LINK, MONARCH PUMP.	1	V2-SH-149
11	PIN & RETAINING RING-BACKUP PUMP	2	V2-SH-017
12	DECAL, OIL LEVEL WARNING	1	32-10-154
13	PLUG,3/8"NPT,PLASTIC	1	10333
14	O-RING,#13,NITRILE,.43ID	1	24013
*	KIT, PUMP MOTOR BRUSH SET	1	V2-SH-115B

DATE: 03/03/97
DWG. F9BXX001
REV. A

PUMP ASSEMBLY
 F9B SERIES (ALL MODELS) WHEELCHAIR LIFT
 SERIAL NO'S. 3692 - PRESENT

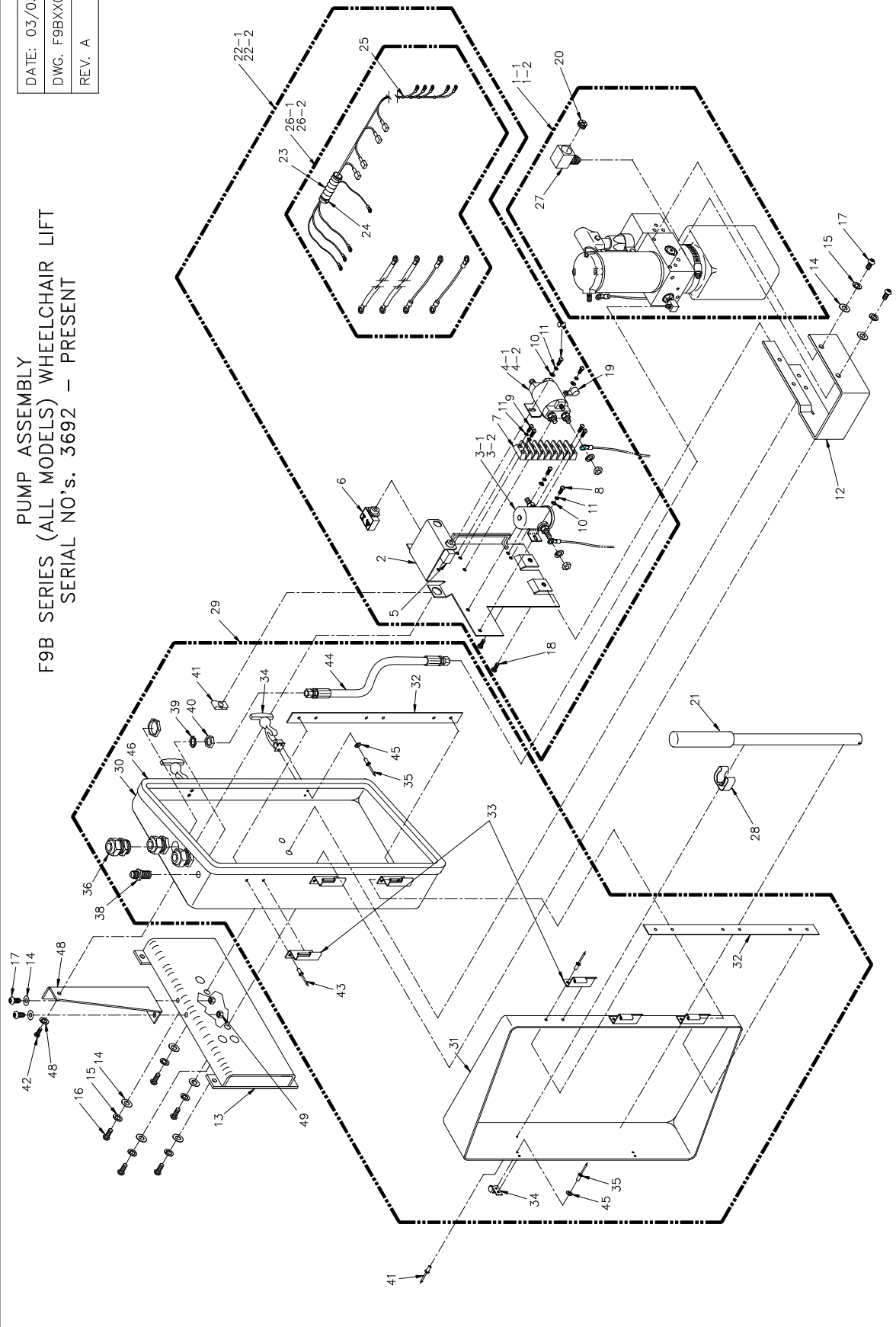


FIGURE 5-2: PUMP ASSEMBLY

**FIGURE 5-2: PUMP ASSEMBLY
F9B SERIES (ALL MODELS) WHEELCHAIR LIFT
SERIAL NO's. 3692 - PRESENT**

REF	DESCRIPTION	QTY	PART NO
1-1	HYD PWR UNIT - NO TOP, VV RES, 2000PSI 12V	1	PMP 12000307
1-2	HYD PWR UNIT - NO TOP, VV RES, 2000PSI 24V	1	PMP 24000307
2	PLATE-WASSY SOLENOID	1	F9-0360
3-1	SOLENOID, SINGLE POLE SINGLE THROW, 12V	1	26444
3-2	SOLENOID, SINGLE POLE SINGLE THROW, 24V	1	264492
4-1	SOLENOID-12V, DP LARGE	1	26447
4-2	SOLENOID-24V DP LARGE	1	26450
5	CIRCUIT BREAKER, 5 AMP.	1	26511
6	CIRCUIT BREAKER, 30 AMP	1	26510
7	TERMINAL STRIP-7 TERM	1	265680
8	MS-10-32 X 0.313 PAN PHIL SST (BAG OF TEN)	4	15923
9	MS-10-32 X 0.75 PAN PHIL	4	28147
10	WASHER-#10 FLAT SST	4	282715
11	WASHER-#10 SPLIT LOCK SST	8	282725
12	BRACKET-PUMP MOUNTING.	1	F9-0204
13	BRACKET-PUMP MOUNTING, WASSY	1	UV-PF-945
14	WASHER-0.32 ID X 0.75 OD X0.080 SST	9	282776
15	WASHER-5/16 SPLIT LOCK	7	282785
16	SCS-5/16-24 X 0.75 BTN SKT SST	5	28702
17	SCS-5/16-18 X 0.75 BTN SKT SST.	4	282285
18	SCS-10-32 X 0.50 BTN SKT SST	2	28156
19	CABLE CLAMP, 3/8"	1	25516
20	PLUG, RESERVOIR, BREATHER FILLER	1	V2-SH-106
21	HANDLE, MANUAL BACKUP PUMP	1	V2-SH-111
22-1	SOLENOID PLATE ASSY-12V	1	F9-0358
22-2	SOLENOID PLATE ASSY-24V	1	F9-0370
23	CONDUIT PLASTIC ½	0.17	27200
24	CABLE TIE-5.5" (NAT)	2	25520
25	CABLE TIE-4.0" (NAT)	9	25519
26-1	HARNESS-ASSY PUMP SOLENOID PLATE 12V	1	F9-0243
26-2	HARNESS-ASSY PUMP SOLENOID PLATE 24V	1	F9-0246
27	ADPTR-L JICM/NPSM 90 LARGE	1	V2-SH-013
28	CLIP-EMERGENCY TOOLS	2	25543
29	PUMP ENCLOSURE ASSY**	1	F9-0371
30	BASE-PUMP ENCLOSURE	1	F9-0216
31	DOOR-PUMP ENCLOSURE	1	F9-0217
32	PLATE REINFORCEMENT-PUMP ENCLOSURE	2	F9-0255
33	HINGE-2.50 X 2.00 SST	6	F9-0218
34	LATCH, DRAW-FLEXIBLE T-HANDLE	2	25089
35	RIVET-1/8 X 3/8 BLIND AL (BAG OF TEN)	8	14490
36	STRAIN RELIEF, STR THRU, LIQ TIGHT	3	26284
37	RIVET, BLIND, 5/32 X .19-.25 (ASD 5-4) (BAG OF TEN)	2	15910
38	ADPTR-STR 7/16M 7/16M JIC/JIC BHD 2.08L	1	V2-SH-981
39	WASHER-7/16 EXTERNAL STAR SST	1	282915
40	NUT-HEX 7/16-20 PLATED JAM	1	14-10-107
41	SPRING NUT, 1/4 X 20, SST	1	283105
42	SCS-1/4-20 X 0.625 BTN SKT SST	1	281955
43	RIVET-BLIND AL, 3/16 X 0.45	12	28704
44	HOSE ASSY., 11" X 1/4 JIC X 1/4 JIC	1	F9-0333
45	WASHER #8 FLAT (BAG OF TEN)	8	15917
46	SEAL, DOOR-7/16 X 53/64	5.33	26679
47	WASHER-1/4 FLAT SST	1	282735
48	BRACKET - STIFFNER	1	F9-0378
49	NUT -5/16-18-NYLON	2	28314

DATE: 02/18/97
DWG. F9BEX006
REV. E

LIFT ENCLOSURE
 F9B SERIES EXPORT WHEELCHAIR LIFT
 SERIAL NO.'s. 3692 - PRESENT

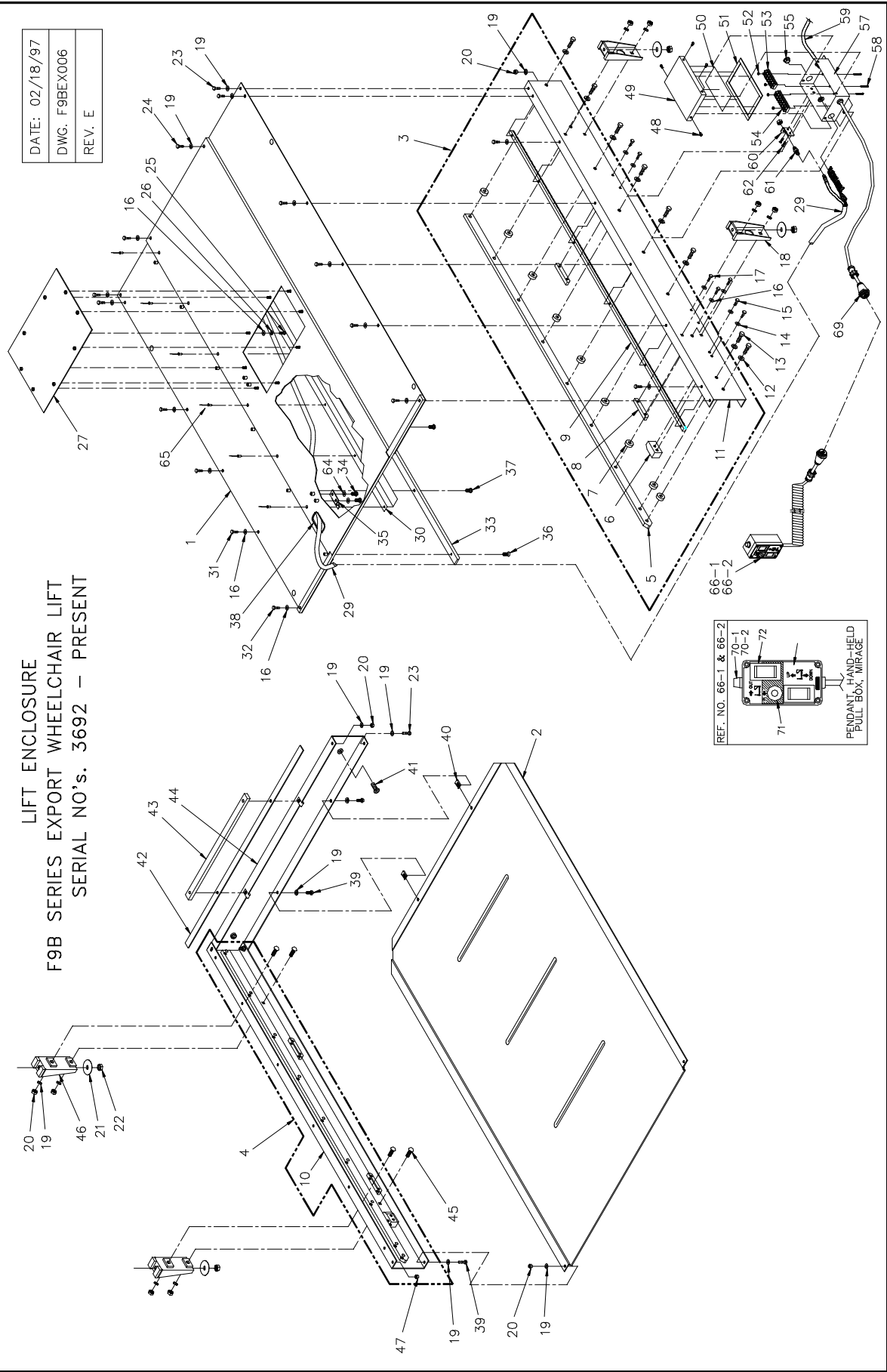


FIGURE 5-3: LIFT ENCLOSURE

**FIGURE 5-3: LIFT ENCLOSURE
F9B SERIES EXPORT WHEELCHAIR LIFT
SERIAL NO's. 3692 - PRESENT**

REF	DESCRIPTION	QTY	PART NO
1	COVER-ASSY.,TOP, F9B050	1	F9-0410
2	COVER, BOTTOM, F9B050	1	F9-0411
3	ASSY., MECH., RH., CHANNEL	1	UV-MF-710
4	ASSY., MECH., LH., CHANNEL	1	UV-MF-709
5	RAIL, STAINLESS GUIDE	2	UV-MF-708
6	CARRIAGE STOP	2	UV-MF-044
7	SPACER, 0.40 THICK	18	UV-MF-002
8	BOTTOM COVER RETAINER	4	UV-MF-046
9	GEAR RACK, 16 DP, 1/2 FACE	2	UV-MF-707
10	CHANNEL, 61.50 LH.- F9004	1	UV-MF-703
11	CHANNEL, 61.50 RH.- F9004	1	UV-MF-704
12	WASHER 3/8 FLAT	18	28283
13	BOLT-HEX 3/8-16 X 1.00 GR5	18	28235
14	WASHER 5/16 SPLIT LOCK	4	28278
15	BOLT-HEX 5/16-18 X 0.50 GR5	4	14-08-108
16	WASHER 1/4 FLAT SAE	20	28273
17	BOLT-HEX 1/4-20 X 0.625 GR5	12	28164
19	WASHER 5/16 FLAT SAE	14	28277
20	NUT-HEX 5/16-18, NYLON INSERT	4	28314
23	BOLT-HEX 5/16-18 X 7/8 GR5 SST.	4	282165
24	BOLT-HEX 5/16-18 X 1.25	2	28223
25	SOCKET BUTTON, 1/4-20 X 5/8	8	28162
26	WASHER 1/4 SPLIT LOCK	16	28274
27	COVER, BRAKE COMP., ACCESS HOLE, ASSY.	1	UV-MF-037
29	HARNES-MAIN WITH HYDRAULIC F9B050	1	F9-0414
30	GUIDE-HOSE	1	F9-0409
31	BOLT-HEX, 1/4-20 X 0.50 GR5	18	28165
32	BOLT-HEX, 1/4-20 X 1.00 GR5 (BAG OF TEN)	2	14493
33	RAIL-ALIGNMENT	1	F9-0408
34	CARRIAGE BOLT, 1/4-20 X 0.625 GR5	4	14-07-108
35	BRACKET, HOSE /CABLE CLAMP	2	F9-0026
36	SCS-1/4 X 0.75 FLAT SKT SST (BAG OF TEN)	1	15948
37	MS. 1/4 X 0.625 PHIL PAN	5	281631
38	GROMMET, CATERPILLAR, 1/8	1	26646
39	BOLT-HEX 5/16-18 X 0.75 (BAG OF TEN)	4	15901
40	NUT-SPEED U-TYPE 5/16-18	4	28674
41	BUMPER, ADJUSTABLE, SHORT	2	UV-MF-096
42	GASKET, TOP COVER	1	UV-MF-033
43	SHIM, TOP COVER	1	UV-MF-047
44	ASSY., WELD, REAR CHANNEL	1	UV-MF-095
46	ASSY., WELD INSTALLATION BRACKET	2	UV-IN-102
47	NUT-HEX, 1/4-20 PLATED, THIN NYLON	4	14-08-304
48	SCS-10-32 X 0.50 BTN SKT SST	4	28156
49	COVER, PULLBOX.	1	UV-MF-063
50	DECAL-PULLBOX TO PUMP WIRING DIAGRAM	1	26249
51	TAPE, WEATHER STRIP 1/2 W X 1/8 THK	.03	06-06-177
52	NUT-HEX 6-32	4	28301
53	TERMINAL STRIP 7 TERM., 10-18 GA	1	26566
54	TERMINAL STRIP 8 TERM., 10-18 GA	1	26567
55	HOSE PLUG, HEYCO	1	26285
56	STRAIN RELIEF, STR., THRU., LIQ. TIGHT	1	26284
57	WELD ASSY., PULLBOX	1	UV-MF-160
58	MS-6-32 X 0.75 PAN PHIL	4	28053
59	HARNES, PUMP TO PULLBOX, 26 FT..	1	UV-ES-219
60	BRACKET-BULKHEAD FITTING	1	F9-0412
61	ADPTR-STR 7/16 M JIC/JIC BHD 2.08L	1	V2-SH-981
61-1	PENDANT-ASSY., F9A, 12V	1	F9-0375
62	SCS-10-32 X 0.375 FLAT SKT SST	2	28951
63	BOLT CS 1/4 20 X 0.625 HEX SST	10	281645
64	WASHER 1/4 SPLIT LOCK SST	10	282745
65	RIVET, BLIND 3/16 X 0.45 DOME	6	28704
66-2	PENDANT-ASSY., F9A, 24V	1	F9-0372
67	PLUG, MALE 9-PIN AMP #206708	1	26467
68	AMP 9-PIN STRAIN RELIEF	1	26468
69	HARNES-PULLBOX TO PENDANT, F9B	1	F9-0386
70-1	LIGHT-LIFT ARMED INDICATOR	1	UL-ES-034

70-2	LIGHT-LIFT ARMED INDICATOR, 24V	1	V2-ES-016
71	SWITCH-ASSY, WIRES AND TERMINAL	1	264117
72	SWITCH-SPDT ROCKER MOM CROSS SERRATED	2	264115

-This page intentionally left blank-

DATE: 02/19/97
DWG. F9BEX003
REV. C

PLATFORM ASSEMBLY
 F9B SERIES EXPORT WHEELCHAIR LIFT
 SERIAL NO's. 3692 - PRESENT

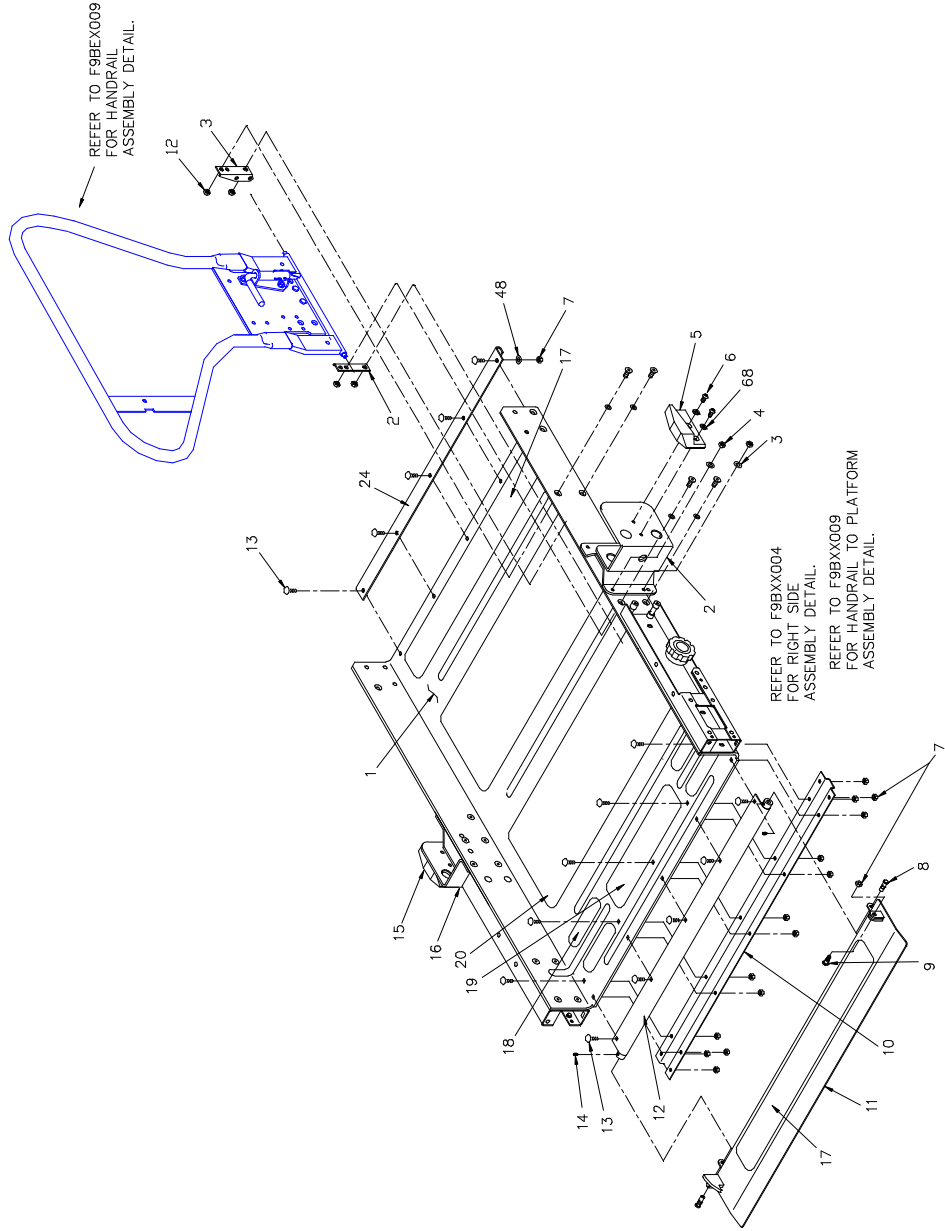


FIGURE 5-4: PLATFORM ASSEMBLY

DATE: 02/19/97
DWG. F9BXX004
REV. C

PLATFORM ASSEMBLY, RIGHT-SIDE DETAIL
 F9B SERIES (ALL MODELS) WHEELCHAIR LIFT
 SERIAL NO's. 3692 - PRESENT

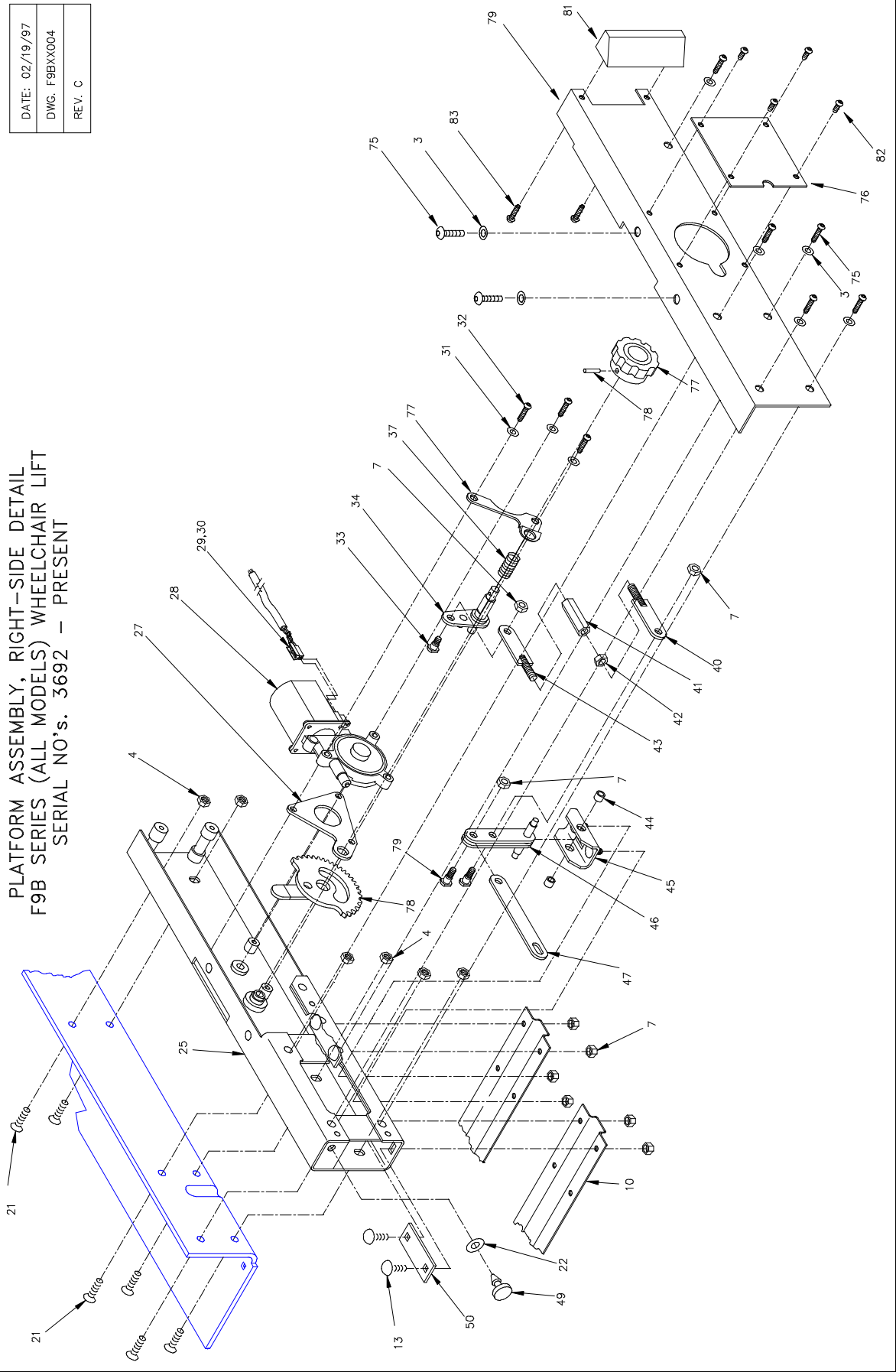


FIGURE 5-5: PLATFORM ASSEMBLY, RIGHT SIDE DETAIL

DATE: 02/19/97
DWG. F9BXX005
REV. C

PLATFORM ASSEMBLY, LEFT-SIDE DETAIL
 F9B SERIES (ALL MODELS) WHEELCHAIR LIFT
 SERIAL NO's 3692 - PRESENT

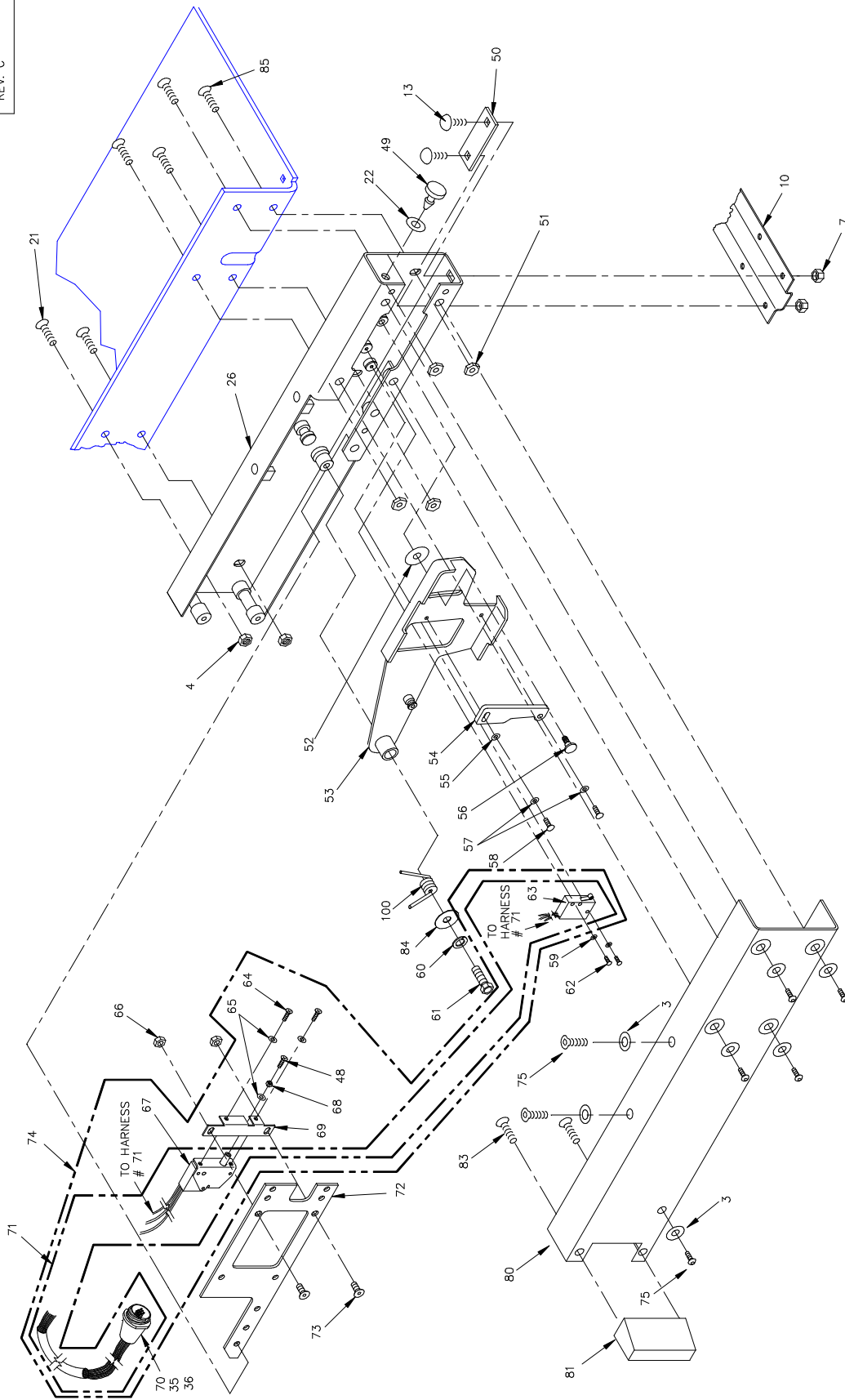


FIGURE 5-6: PLATFORM ASSEMBLY, LEFT SIDE DETAIL

**FIGURES 5-4, 5-5, 5-6: PLATFORM ASSEMBLY
F9B SERIES EXPORT (AND ALL MODELS) WHEELCHAIR LIFT
SERIAL NO's. 3692 - PRESENT**

REF	DESCRIPTION	QTY	PART NO
1	PLATFORM, 32.25 X 47.00, PRS. SW	1	UV-PF-224
2	ASSY., PLATFORM MOUNT, RH., TRAIN LIFT	1	UV-PF-808
3	WASHER, FLAT, 0.32 ID X 0.75 OD X 0.080 SST.	12	282776
4	NUT-HEX, 5/16-18, JAM, NYLON INSERT, SST.	12	283146
5	BLOCK, GUIDE, PLATFORM MOUNT, RH.	1	UV-DS-029
6	SOCKET BUTTON, 5/16-18 X 3/4 SST.	10	282285
7	BLOCK, PLATFORM GUIDE, RH. SW-T	1	UV-PF-927
8	BOLT-HEX, 5/16-18 X 1 1/2, SST.	8	282175
9	BLOCK, PLATFORM GUIDE, LH. SW-T	1	UV-PF-926
10	HANDRAIL, WELD ASSEMBLY, RH.	1	UV-PF-498
11	SHIM, HANDRAIL 0.50 THK.	4	UV-PF-881
12	NUT-HEX, 1/4-20, NYLON INSERT, SST.	23	283095
13	PIN-CLEVIS, 5/16 OD X 1.00, SST.	2	UV-PI-016
14	BOLT, SHOULDER, 0.250 X 0.313 OD, PRS	3	UV-PF-899
15	STIFFENER, RIB, PRS., SW	2	UV-PF-235
16	ROLLSTOP- WASSY., PRS.	1	F9-0510
17	STIFFENER, TUBE, PRS. PIVOT, WELD ASSY., SW	1	UV-PF-231
18	BOLT, CARRIAGE, 1/4-20 X 3/4, SST.	33	14-07-108
19	SOCKET SET, 1/4-20 X 1/4, SST.	2	282005
20	HANDRAIL, WELD ASSEMBLY, LH.	1	UV-PF-497
21	BLOCK GUIDE, PLATFORM MOUNT, LEFT	1	UV-DS-028
22	ASSY., PLATFORM MOUNT, LH. TRAIN LIFT	1	UV-PF-811
23	SAFETY TREAD, 25 1/2 X 3, SAFETY YELLOW	3	25664
24	SAFETY TREAD, 5.50 X 1.50, SAFETY YELLOW	4	25674
25	SAFETY TREAD, 12.75 X 3.00, SAFETY YELLOW	1	25673
26	SAFETY TREAD, 25 1/2 X 12.00, OCEAN GREY	2	25661
27	SOCKET FLAT, 5/16-18 X 3/4 SST.	24	282245
28	SOCKET SET, 10-24 X 1/4, SST.	2	281005
29	BUSHING, STIRRUP PIVOT	2	UV-PF-039
30	WASHER, FENDER 0.31 ID X 1.25 OD X 0.05, SST.	3	283715
31	BOLT, SHOULDER 3/8X 3/8	2	28375
32	ROD END, (M) LH. THD. R1700	2	25501
33	NUT-HEX, 3/8-24 LEFT HAND THREAD	2	28320
34-1	ASSY., WELD, ACTUATOR, LINK ARM, B-PLATE	2	UV-PF-423
34-2	ASSY., WELD, B-PLATE, ACTUATOR, LONG TRAVEL	2	UV-PF-429
35	WASHER, NYLON, 0.375 ID X 0.630 X 0.032	2	28562
36	ASSY., WELD, BRIDGEPLATE, STIRRUP, RH.	1	UV-PF-903
37	ROLLER, B-PLATE, CAM FOLLOWER, TRAIN LIFT	2	UV-PF-842
38	ROD, B-PLATE ACTUATOR RETAINER	1	UV-PF-772
39	WASHER, 1/4 FLAT, SAE., SST.	5	282735
40	SOCKET FLAT, 5/16-18 X 1.00, SST.	2	282251
41	STIFFENER, PLATFORM REAR, SW-T	1	UV-PF-898
42	SOCKET BUTTON, 1/4-20 X 5/8, SST.	2	281955
43	WASHER, ADAPTER, STIRRUP	2	UV-PF-424
44	ROD, B-PLATE CAM FOLLOWER, ACTUATOR	1	UV-PF-770
45	ASSY., WELD, BRIDGEPLATE STIRRUP, LH.	1	UV-PF-904
46	BRACKET, PIVOT, BRIDGEPLATE	2	UV-PF-768
47	SOCKET BUTTON, 1/4-20 X 1/2 SST.	2	281965
48	SHIM, PLATFORM MOUNT, GUIDE BLOCK	2	UV-PF-728
49	NUT, S.S. TEE, 5/16 OD X 1/4 L NECK (BAG OF TEN)	2	14485
55	GUIDE, BRIDGEPLATE. BLUE BIRD	2	UV-PF-766
56	SPRING, UNFOLD KICKOUT	2	25436
57	RETAINER, BP. RETURN SPRING, WELD ASSY.	2	UV-PF-421
58	SOCKET BUTTON, 5/16-18 X 3/4, SST.	2	282285
59	BOLT-HEX 5/16-18 X 1 1/4	8	28223
60	CHANNEL, HOUSING, RH. WELD ASSY., PRS., SW	1	UV-PF-227
61	CHANNEL, HOUSING, LH. WELD ASSY., PRS., SW	1	UV-PF-229
62	NUT-HEX, 5/16-18, NYLON INSERT, SST.	16	283145
63	GEAR, PRS.	1	UV-PF-880
64	PLATE, KEEPER, PRS., GEAR	1	UV-PF-875
65	GEAR MOTOR, DELCO PH3, 9T RH. MED-TORQ.	1	25486
66	TERMINAL, CONNECTOR-2 CIRCUIT, PACK-CON	1	25481
67	TERMINAL, PACK-CON SERIES 1, HD. FEM	2	26551
68	WASHER, 1/4 SPLIT LOCK, SST.	3	282745
69	SOCKET, BUTTON, 1/4-20 X 1.13, SST.	3	281985

70	BOLT-SHOULDER PRS.	1	UV-PF-937
71	RELEASE TRIGGER, WELD ASSY., PRS.	1	UV-PF-889
72	NUT-HEX, 1/4-20, JAM, NYLON INSERT, SST.	13	283096
73	SPRING, MANUAL RELEASE TRIGGER, PRS.	1	UV-SP-019
74	WASHER, 1/2 ID D/SHAPE X 1.00 OD X 0.30	1	282825
75	BRACKET, MANUAL RELEASE, RH., WELD ASSY.	1	UV-PF-804
76	COVER, PRS., SW	2	UV-PF-225
77	KNOB, PWR. ROLLSTOP, MIRAGE	1	UV-PF-936
78	ROLL PIN, 1/8 X 1 1/4, SST.	1	28355
79	LINK, GEAR, WELD ASSEMBLY, RH.	1	UV-PF-892
80	LINK, HEX, ADJUSTABLE, PRS	1	UV-PF-863
81	NUT-HEX, JAM, 5/16-18, SST.	1	283154
82	LINK, GEAR, WELD ASSEMBLY, LH. THD.	1	UV-PF-893
83	BUSHING, PIVOT SHAFT, PRS.	2	UV-PF-883
84	BRACKET, MTG., COMP. LINK, WELD ASSY.	1	UV-PF-894
85	LINK, COMPENSATOR, WELD ASSY., PRS.	1	UV-PF-888
86	LINK, ROLLSTOP, PRS.	1	UV-PF-860
87	MS. 6-32 X 5/8 PHIL PAN, SST.	1	280575
88	BUMPER, RUBBER B-1220	2	V2-AC-86
89	KEEPER, REINFORCEMENT	4	UV-PF-855
90	BRACKET, MANUAL RELEASE, LH., WELD ASSY.	1	UV-PF-802
91	MS. SOC., FLAT HD., 5/16-18 X 0.50, SST.	4	282252
92	T-NUT 5/16-18, SST.	4	UV-PF-934
93	WASHER, NYLON, 0.315 ID X 1.156 OD X 0.062	1	28632
94	FOOT, PRS. ACTUATOR, WELD ASSY.	1	UV-PF-909
95	CAM, PRS. SWITCH ACTUATOR	1	UV-PF-918
96	WASHER #10 FLAT SAE., SST.	1	282715
97	SHOULDER SCREW, FLAP LATCH	1	UL-PF-034
98	WASHER #10 SPLIT LOCK, SST.	2	282725
99	MS.SOC., BUTTON, 10-24 X 3/8, SST.	2	281435
100	SPRING, LH., ROLLSTOP ACTUATOR RETURN	1	UV-SP-002
101	WASHER, 5/16 SPLIT LOCK, SST.	1	282785
102	BOLT-HEX, 5/16-18 X 3/4, SST.	1	282205
103	MS. 4-40 X 5/8, PHIL PAN	2	28031
104	WASHER #4, SPLIT LOCK	2	28266
105	LIMIT SWITCH, SEALED, PRS.	1	264103
106	MS. 6-32 X 1/4, PHIL PAN HD., SST.	2	280425
107	WASHER #6, SPLIT LOCK, SST.	2	282685
108	NUT-HEX 10-24, NYLON INSERT, SST.	2	283055
109	PLUNGER SWITCH, SEALED, TAPPED 6-32	1	264102
110	NUT-HEX 6-32, SST.	1	283012
111	BRACKET, MOUNTING, LIMIT SWITCH, PRS.	1	UV-PF-911
112	RECEPTACLE, 9 PIN WO/FLANGE	1	26472
113	HARNESS, ROLLSTOP SWITCH	1	UV-ES-221
114	PLATE, REINF. LH., WELD ASSY., PRS., SW-T	1	UV-PF-908
115	SOCKET, FLAT 10-24 X 1/2, SST.	2	28137
116	ASSY., HARNESS, ROLLSTOP SWITCH	1	UV-ES-852
117	MS. SOC. BUTTON 5/16-18 X 1/2, SST.	1	282287
118	PLATE-PRS MANUAL RELEASE F9B	1	F9-0443
119	BRACKET, SPRING RETAINER F9B	1	F9-0470
120	GEAR-WASSY PRS F9B	1	F9-0452
121	COVER - PRS RH F9B	1	F9-0441
122	BLOCK-PRS COVER	2	F9-0437
123	SCS-10-32 X 0.50 BTN SKT S	4	28156
124	SMS #8 X 1/2 PHIL PAN HD TE (BAG OF TEN)	4	15961

-This page intentionally left blank-

DATE: 08/04/00
 DWG. F9BXX008
 REV. G

CARRIAGE ASSEMBLY
 F9B SERIES (ALL MODELS) WHEELCHAIR LIFT

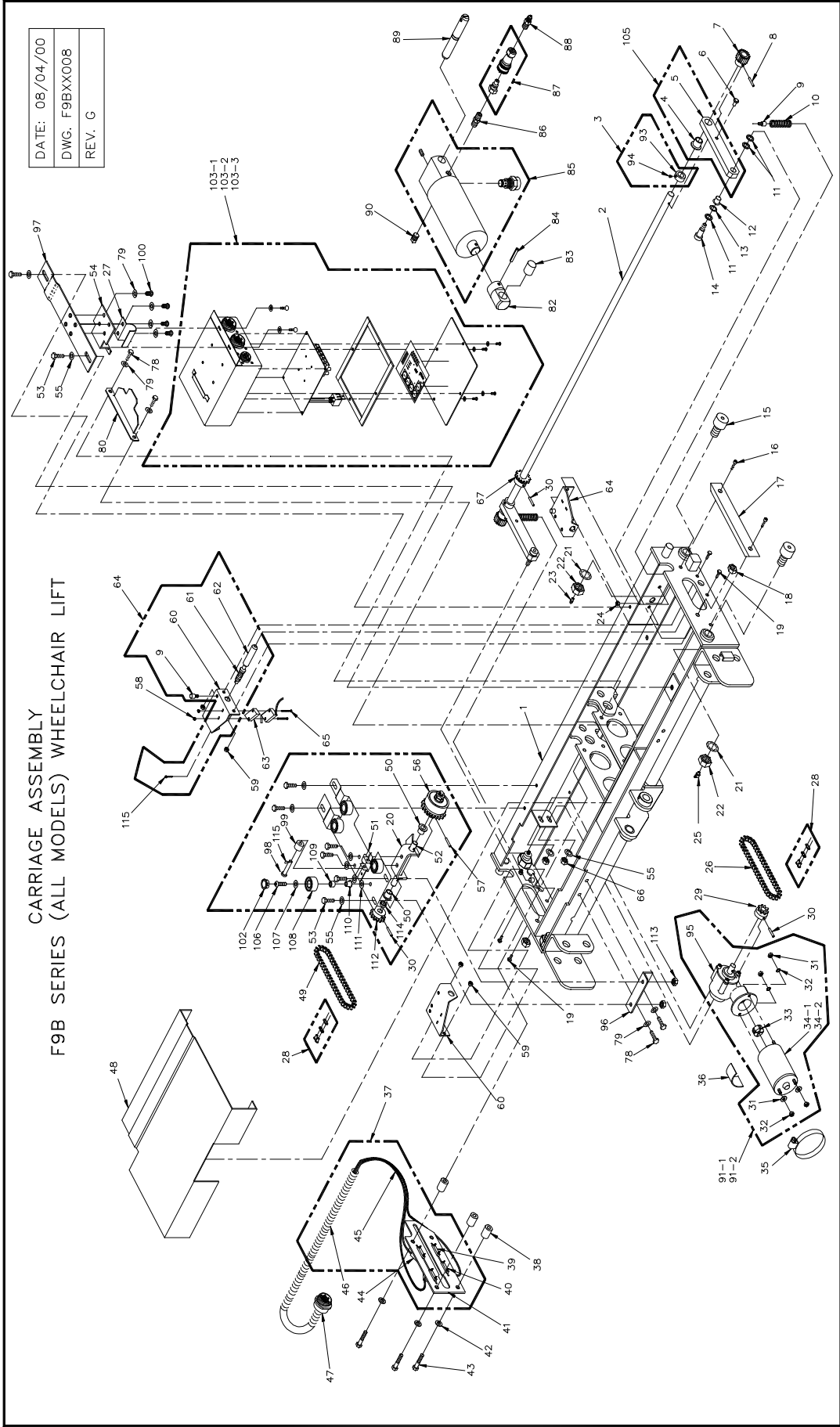


FIGURE 5-7: CARRIAGE ASSEMBLY

**FIGURE 5-7: CARRIAGE ASSEMBLY
F9B SERIES (ALL MODELS) WHEELCHAIR LIFT**

REF	DESCRIPTION	QTY	PART NO
1	CARRIAGE, WELD ASSEMBLY	1	F9-0435
2	SHAFT, DEPLOYMENT DRIVE	1	UV-DS-204
3	COLLAR, 5/8 ID W/SET SCREW	2	UV-BU-007
4	BEARING, DU 0.625 ID X 0.719 OD X 0.38 FL	2	UV-BU-014
5	ARM, POWER SHAFT, SUPPORT	2	UV-DS-051
6	GUIDE, DRIVE SHAFT, PIVOT	2	UV-DS-014
7	GEAR 1.125 PD., 0.63 FACE WIDTH	2	UV-DS-005
8	PIN, "SPIROL", 5/32 X 1.00	3	28418
9	BUTTON, SPRING SUPPORT	3	UV-DS-003
10	SPRING, COMPRESSION, 0.44ID	2	254537
11	WASHER, 0.50 ID X 0.75 OD X 0.06, NYLON	6	14-18-308
12	BUSHING NYLINER, 0.50 X 0.50	2	25298
13	WASHER, 1/2, WAVE	2	28261
14	BOLT, SHOULDER, 0.50 X 0.75	2	28381
15	CAM, FOLLOWER	4	40-20-006
16	SCREW, CAP, SOCKET, 5/16-18 X 3/4	4	282289
17	GUIDE, CARRIAGE	2	UV-DS-027
18	NUT-HEX, 3/8-16 JAM, NYLON INSERT	2	283185
19	BOLT-HEX, 1/4-20 X 5/8 GR5	6	28164
20	BRACKET-WASSY IDLER SHAFT SUPPORT	1	F9-0476
21	WASHER, 3/4, STAR, INTERNAL (BAG OF TEN)	4	15925
22	NUT-HEX, 3/4-16 JAM (BAG OF TEN)	4	15924
23	GREASE FITTING, STRAIGHT PRESS IN	2	21-02-012
24	NUT-HEX, 5/16-18 PLATED, THIN NYLON	2	14-08-305
25	FITTING, GREASE, 65 DEG PRESS-IN	2	21-02-011
26	CHAIN, PRIMARY DRIVE	1	F9-0418
27	CLAMP-HOSE	1	F9-0481
28	LINK, MASTER	2	25043
29	SPROCKET, SYNC #35, 8 TOOTH	1	F9-0450
30	PIN, "SPIROL", 5/32 X 1.25	3	28417
31	WASHER, STAR, INTERNAL, #10	4	28249
32	NUT-HEX, 10-32	4	28306
33	COUPLING, ACTUATOR	1	23596
34-1	MOTOR, 1/4 HP., 12 VDC., SHORT SHAFT	1	25477
34-2	MOTOR, 1/4 HP., 24 VDC., SHORT SHAFT	1	25478
35	CLAMP, HOSE	1	22-10-044
36	GASKET, RUBBER, 1.00 X 2.00 X 1/8	1	UV-DS-016
37	ASSY, SWITCH PLATE	1	F9-0385
38	SPACER, ELECT., PLATE, STAND OFF	3	UV-ES-026
39	BLOCK, SWITCH RETAINER	4	UL-AC-011
40	SMS., #4 X 1.00 PHIL FLAT, TYPE AB, ZINC	8	28036
41	PLATE, SWITCH	1	F9-0173
42	WASHER, FLAT, 5/16 SAE.	8	28277
43	BOLT-HEX, 5/16-18 X 1 1/2 GR5	4	28217
44	SWITCH, LIMIT SEALED, PRE-WIRED	5	264104
45	ASSY, HARNESS SWITCH PLATE	1	F9-0343
46	CONDUIT, PLASTIC 1/2	12	27200
47	PLUG, AMP. CONNECTOR, RECEPTACLE, 14 PIN	1	26254
48	COVER, CARRIAGE CENTER	1	F9-0438
49	CHAIN, SECONDARY DRIVE	1	F9-0429
50	BUSHING, 08FDU06 1/2" X 3/8"	2	25384
51	BRACKET-WASSY., MOTOR MNT/ROLLER MNT	1	F9-0495
52	IDLER, SHAFT, 0.50 OD X 5.0	1	F9-0427
53	CS-5/16-18X0.75 HEX SST	6	282205
54	BRACKET-CARRIAGE ELECT BOX MTG, FRONT	1	F9-0421
55	SEE #42		
56	CLUTCH, TORQUE LIMIT	1	UV-DS-202
57	OIN, SPIROL-5/32X 1 1/4	1	28417
58	NUT-HEX, 4-40 NYLON INSERT	2	28297
59	NUT-HEX, 1/4-20 PLATED, THIN NYLON	9	14-08-304
60	BRACKET, MOUNTING, MICRO SWITCH	3	UV-DS-106
61	SPRING, 1.25 X 0.468 SPR. STL.	2	UV-SP-009
62	PLUNGER, MICRO SWITCH	2	UV-DS-105
63	BLOCK, LIMIT SWITCH	2	V2-ES-79
64	ASSY, PLUNGER	2	UV-ES-112
65	MS. 4-40 X 1/8 PHIL PAN	2	280325
66	NUT-HEX, 5/16-18	2	28313
67	SPROCKET, #35, 12 TEETH, 0.625 BORE	1	UV-DS-002

78	BOLT-HEX, 5/16-18 X 1/2	4	14-02-108
79	WASHER, SPLIT LOCK 5/16	4	28278
80	BRACKET-CARRIAGE ELECT BOX MTG, BACK	1	F9-0420
82	TRUNION, HYDRAULIC CYLINDER	1	UV-SH-010
83	BEARING, DU 0.75 ID X 0.875 OD X 0.38 FL	2	UV-BU-005
84	ROLLPIN, 1/4 X 1 1/2	1	283615
85	HYDRAULIC CYLINDER, MIRAGE LIFT	1	UV-SH-007
86	NIPPLE-HEX, 1/4 X 1 3/8	1	V2-SH-29
87	FITTING, QUICK-DISCONNECT, 1/4	1	UV-SH-003
88	ADAPTER, STRAIGHT, 1/4 NPT. MALE	1	V2-SH-84
89	PIN, 0.75 OD X 5.00	1	UV-PI-003
90	PLUG, HEX SOC., 1/4 NPT	1	V2-SH-620
91-1	GEAR-MOTOR-ASSY'S 12V	1	UV-DS-205
91-2	GEAR-MOTOR-ASSY'S 24V	1	UV-DS-207
92	DECAL, PC. BOARD LAYOUT	1	26211
93	SOCKET SET 10-24 X 1/4	2	28139
94	COLLAR SET SCREW	2	R5-AC-503
95	GEAR, BOX	1	UV-DS-200
96	BRACKET-MOTOR MNT./ROLLER MNT.	1	F9-0430
97	PLATE ASSY, CARRIAGE ELECT BOX MTG.	1	F9-0423
98	PIN-CLEVIS 0.313X1.00, D HEAD SST	1	F9-0069
99	ROLLER-RAIL	1	F9-0248
100	SCS-5/16 X 0.625 SKT SST (BAG OF TEN)	2	15901
101	NUT 10-32 NYLON	1	28307
102	PLUG 0.78 1 DIA HOLE, 0.62 MATL BLAK PLASTIC	4	28945
103-1	ONBOARD CONTROL BOX, MIRAGE 12V	1	10931
103-2	ONBOARD CONTROL BOX, MIRAGE 24V (DOMESTIC ONLY)	1	10953
103-3	CONTROL BOX, MIRAGE 24V (EXPORT ONLY)	1	18020
105	LINK, DRIVE SHAFT, PIVOT ASSEMBLY	1	UV-DS-052
106	SCS-5/16 X 0.75 BTN SKT SST	4	28229
107	WASHER-5/16 X 0.75 OD X FLAT BR7	4	28630
108	ROLLER-ALIGNMENT	4	F8-0120
109	BUSHING-ALIGNMENT	4	F8-0121
110	BUSHING-08FDU06, 1/2 "X 3/8"	4	25384
111	WASHER-0.32 ID X 0.59 OD X 0.006	4	28630
112	SPROCKET, WASSY. 17T, #35, .50 BORE	1	F9-0406
113	NUT-5/16-18 NYLON SST	2	283145
114	SPACER, INTERMEDIATE DRIVE SHAFT	1	F9-0064
115	COTTER PIN FOR # 98 (BAG OF TEN)	2	15930

-This page intentionally left blank-

DATE: 02/26/97
DWG. F9BXX007
REV. D

TRAVELING FRAME ASSEMBLY
 F9B SERIES (ALL MODELS) WHEELCHAIR LIFT
 SERIAL NO's. 3692 - PRESENT

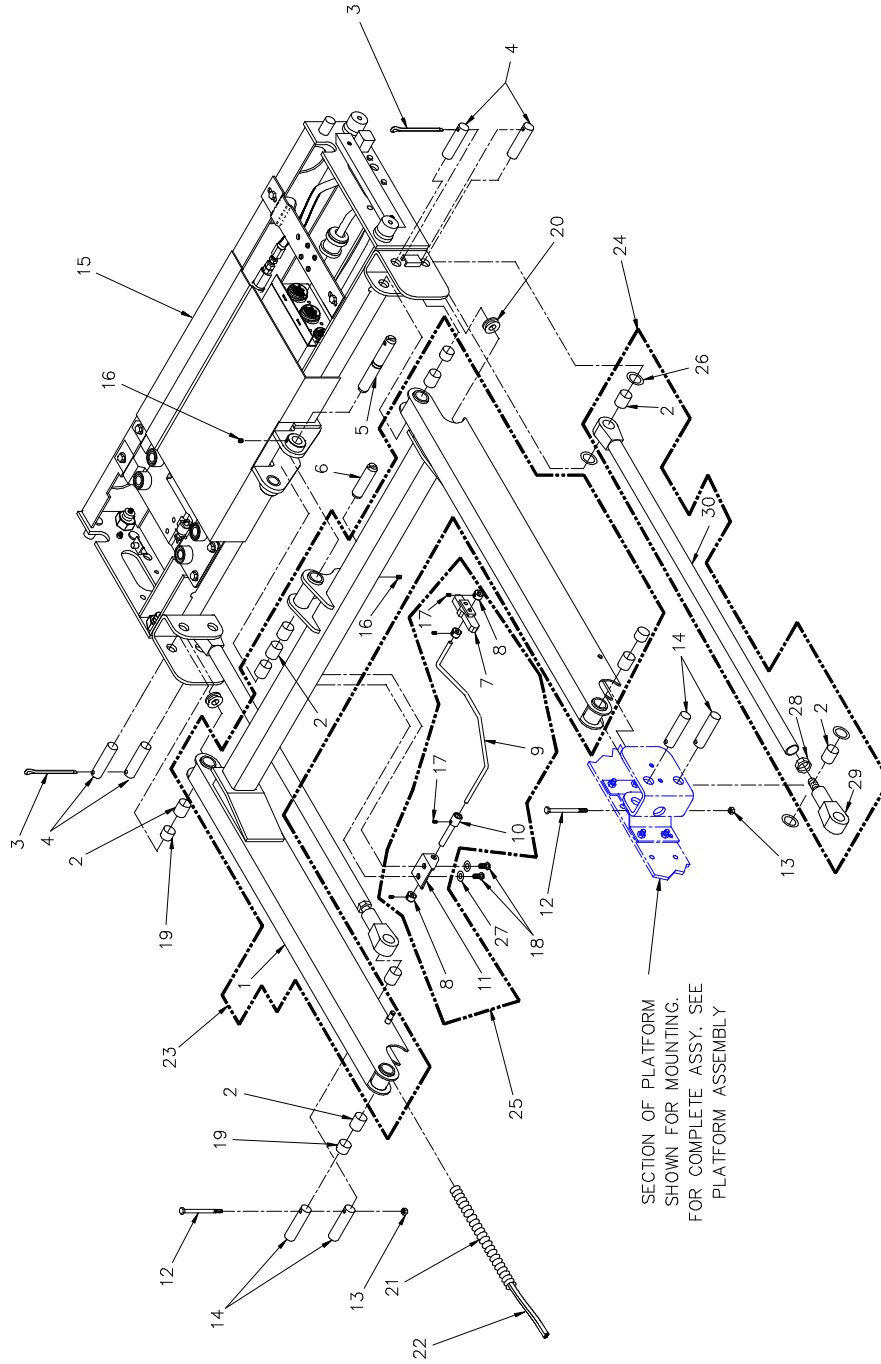


FIGURE 5-8: TRAVELING FRAME ASSEMBLY

**FIGURE 5-8: TRAVELING FRAME ASSEMBLY
F9B SERIES (ALL MODELS) WHEELCHAIR LIFT
SERIAL NO's. 3692 – PRESENT**

REF	DESCRIPTION	QTY	PART NO
1	LIFT FRAME WLDT, COATED, RED	1	UV-LF-200
2	BEARING, DU .750 ID X 8.75 OD X 1.00	9	UV-BU-005
3	PIN, COTTER .25 X 3.50	2	14-33-860
4	PIN, .75 OD X 2.740	4	UV-PI-002
5	PIN, .75 OD X 5.00	1	UV-PI-003
6	PIN, .75 OD X 2.830	1	UV-PI-004
7	BLOCK- SWITCH ACTUATOR CAM	1	F9-0206
8	COLLAR, .25 ID X .63 OD X .38	3	V3-BU-15
9	ROD, SWITCH CAM ACTUATOR	1	F9-0557
10	COLLAR, ACTUATOR ROD	1	UV-ES-036
11	BRACKET, F9000 SERIES ELECTRICAL SYSTEM	1	UV-ES-027
12	BOLT-HEX, 1/4 X 3.50	2	281765
13	NUT- 1/4 - 20 JAM NYLON SST	4	283096
14	SET SCREW, 1/4 - 20 X .25	2	28200
15	CARRIAGE- ASSEMBLY, F9B050 COMMON COMP.	1	F9B0XX-XXXXX1X
16	PIN, .750 X 3.125	4	UV-PI-006
17	SCREW, SOCKET SET, 10-32 X 1/4 SST	4	28155
18	SOCKET BUTTON, 5/16 - 18 X 1/2 SST	2	282287
19	BEARING, DU .75 ID X 8.75 OD X .63	4	UV-BU-006
20	GROMMET, 1.06 OD X .50 ID X .25 GROOVE	2	26645
21	SPRING, CONDUIT	2	UV-SP-025
22	HARNESS, ASSY., SPIDER, w/ POWER ROLLSTOP	1	F9-0158
23	ASSEMBLY, LIFTING FRAME 25-5/8"	1	UV-LF-502
24	ASSEMBLY, MECHANICAL LOWER P-ARM 25 - 5/8"	2	UV-LF-211
25	ASSEMBLY, ACTUATOR ROD F9B050	1	F9-0453
26	SPACER - 59	8	VT-BU-42
27	WASHER- 5/16 SPLIT LOCK	2	28278
28	NUT-HEX 9/16 - 18 JAM	2	28366
29	ARM, LOWER PARALLEL, ADJUSTABLE	2	UV-LF-015
30	WASSY-ARM PARALLEL, FIXED	2	UV-LF-212

DATE: 03/03/97
DWG. F9BXX010
REV. D

BRIDGEPLATE ASSEMBLY
 F9B SERIES (ALL MODELS) WHEELCHAIR LIFT
 SERIAL NO's. 3692 - PRESENT

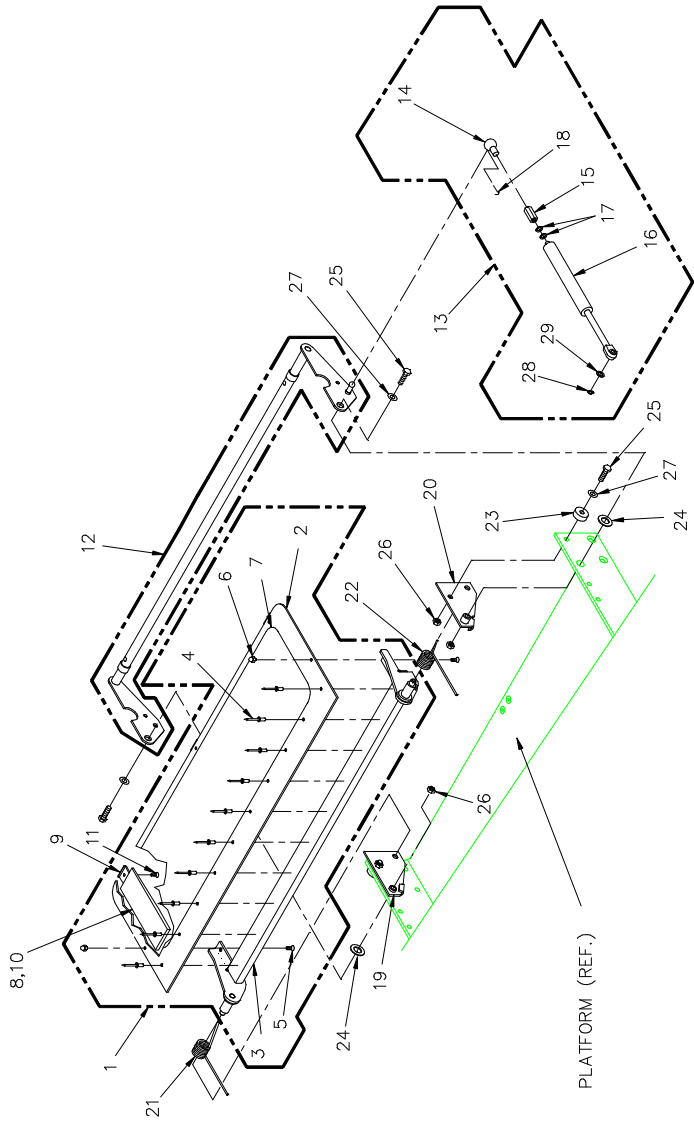


FIGURE 5-9: BRIDGEPLATE ASSEMBLY

**FIGURE 5-9: BRIDGEPLATE ASSEMBLY
F9B SERIES (ALL MODELS) WHEELCHAIR LIFT
SERIAL NO's. 3692 – PRESENT**

REF	DESCRIPTION	QTY	PART NO
1	BRIDGEPLATE-ASSY	1	F9-0291
2	PLATE-BLANK BRIDGEPLATE 9", L-UTS	1	F9-0288
3	FRAME-WASSY., BRIDGEPLATE	1	F9-0295
4	RIVET, BLIND AL, 3/16 X 3/8 #AD66BS (BAG OF TEN)	10	15918
5	SCS-10-24 X 0.50 FLAT SKT SST	2	28137
6	NUT-10-24 HEX ACORN	2	28296
7	SAFETY TREAD, 25 1/2 X 7, SAFETY	1	25665
8	BLOCK-BRIDGEPLATE GUIDE BUMPER	1	F9-0290
9	SKID-BRIDGEPLATE	3	UL-BA-021
10	TAPE-ADHESIVE TRANSFER, 10MIL, 1" THK	.5	263110
11	MS-10-24 X 0.25 FLAT PHIL UNDER CUT	3	28106
12	STIRRUP-WASSY., BRIDGEPLATE	1	F9-0294
13	ROD-ASSY., BRIDGEPLATE ACTUATOR 7" UTS	2	F9-0559
14	BALL SKT-M8 X 9.5, R5MM, 19MM, ZINC	1	25494
15	EXTENSION LINK-GAS STRUT, 0.63	1	UV-PF-078
16	SPRING-PNEUMATIC, 100 LBF (C16-12745)	1	UV-SP-006
17	WASHER- 5/16 FLAT	2	28277
18	CLIP-BALL RETAINER, 10MM SUSPA	2	UV-SP-015
19	BKT-B-PLATE WASSY., L.H.	1	UV-PF-308
20	BKT-B-PLATE WASSY, MOUNT	1	UV-PF-309
21	SPRING-L.H., B-PLATE RETURN RED	1	UV-SP-010
22	SPRING-R.H., B-PLATE RETURN RED	1	UV-SP-011
23	BUSHING-.75OD X .32ID X .38	2	UV-PF-312
24	WASHER- 0.578ID X 1.067 X 0.062 NYLON	2	28575
25	CS-5/16-18 X 1.25 HEX (BAG OF TEN)	4	14499
26	NUT-5/16-18 NYLON	4	28314
27	WASHER- 5/16 FLAT	4	28277
28	SNAP RING, 5/16" EXTERNAL	1	14-31-030
29	WASHER-0.328ID X 0.56OD X 0.030 SST	1	28566

DATE: 02/24/97
DWG. F9BEX009
REV. B

HANDRAIL ASSEMBLY
 F9B SERIES EXPORT WHEELCHAIR LIFT
 SERIAL NO's. 3692 - PRESENT

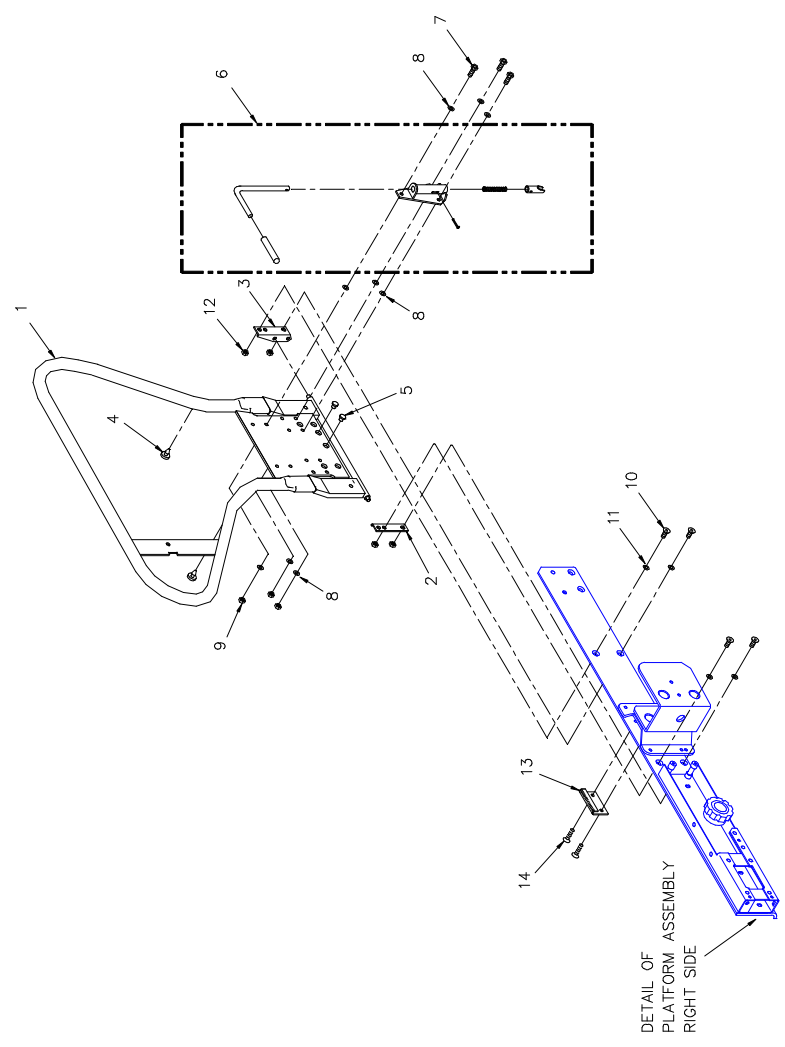


FIGURE 5-10: HANDRAIL ASSEMBLY

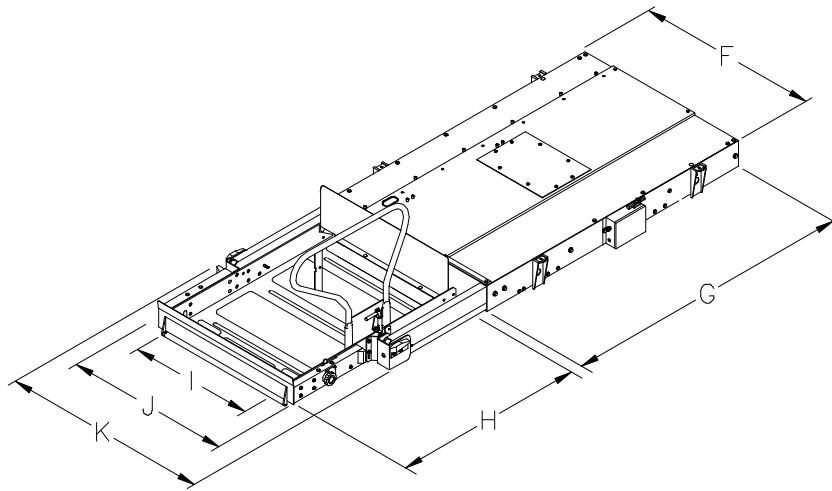
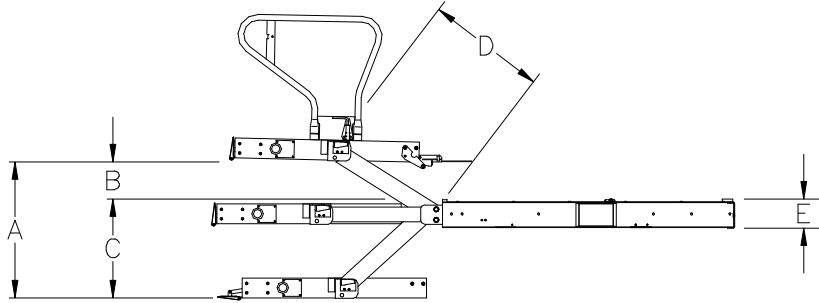
**FIGURE 5-10: HANDRAIL ASSEMBLY
F9B SERIES EXPORT WHEELCHAIR LIFT
SERIAL NO's. 3692 – PRESENT**

REF	DESCRIPTION	QTY	PART NO
1	HANDRAIL, WELD ASSEMBLY R.H.	1	F9-0283
2	BRACKET-HANDRAIL PIVOT, R.H.	1	F9-0248
3	BRACKET-HANDRAIL PIVOT, L.H.	1	F9-0249
4	BUMPER-RUBBER B-1220	2	V2-AC-86
5	BUMPER-0.63 OD X 0.31 THK RUBBER	2	284081
6	MECH ASSY-LATCH	1	UV-PF-107
7	CS-1/4-20 X 0.75 HEX SST	3	281665
8	WASHER-1/4-20 FLAT SST	9	282735
9	NUT-1/4-20 JAM NYLON SST	3	283096
10	MS-5/16-18 X 3/4 FLAT SKT SST	4	282245
11	WASHER-0.32 ID X 0.75 OD X 0.080 SST	4	282776
12	NUT-5/16-18 JAM NYLON SST	4	283146
13	PLATE-HANDRAIL LOCK, STRIKER	1	F9-0256
14	SCS-1/4-20 X 0.75 FLAT SKT SST	2	28184

APPENDIX 1 LIFT SPECIFICATIONS

F8100 SERIES EXPORT USE WHEELCHAIR AND STANDEE LIFT

Power..... electro-hydraulic motor Pump rating - 12 volts DC..... 1800 psi, 1250 watt Pump rating - 24 volts DC..... 1800 psi, 1250 watt Hydraulic cylinders3.0", single acting	Rated load capacity660 lbs. Manual backup (up).....hand pump Manual backup (down).....pressure release valve Weight..... approx. 425lbs
--	--



DIMENSIONS, inches

MODEL	A	B	C	D	E	F	G	H	I	J	K
F9B	Floor-to-ground travel	Travel Above	Travel Below	Arm Length	Stowed Height	Stowed Width	Stowed Length	Usable Platform Length	Usable Platform Width	Clear Entry Width	Traveling Frame Width
	38.0	13.5	24.5	25.6	7.0	42.0	62.7	40.0	31.8	31.8	41.4

