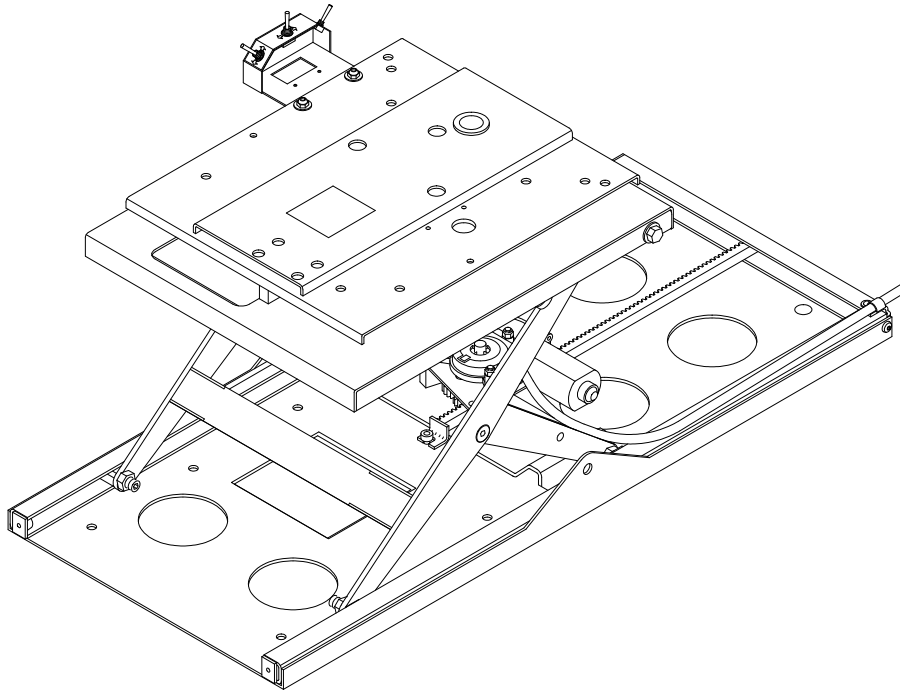


## IV. PARTS DIAGRAMS AND LISTS

This chapter contains parts diagrams and parts lists for the RICON R1209 Six-Way Power Seat Base. The exploded view of each major lift assembly shows individual components referenced by numbers. On each associated parts list are reference numbers, parts descriptions, the quantities used, and Ricon part numbers.



PRODUCT MODEL AND KIT NUMBERS	
PRODUCT NUMBER	R1209, R1209-E and R1209-L
DOCUMENTATION KIT NUMBER	16054
SPARE DECAL KIT NUMBER	17141

<b>PARTS DIAGRAM</b> .....	<b>PAGE</b>
FIGURE 4-1: POWER SEAT BASE - UPPER .....	4-2
FIGURE 4-2: POWER SEAT BASE - LOWER.....	4-3
<b>R1209 SPECIFICATIONS</b> .....	<b>4-6</b>

SIX WAY POWER SEAT BASE  
 ASSEMBLY  
 SERIAL NO's. 91685 and HIGHER

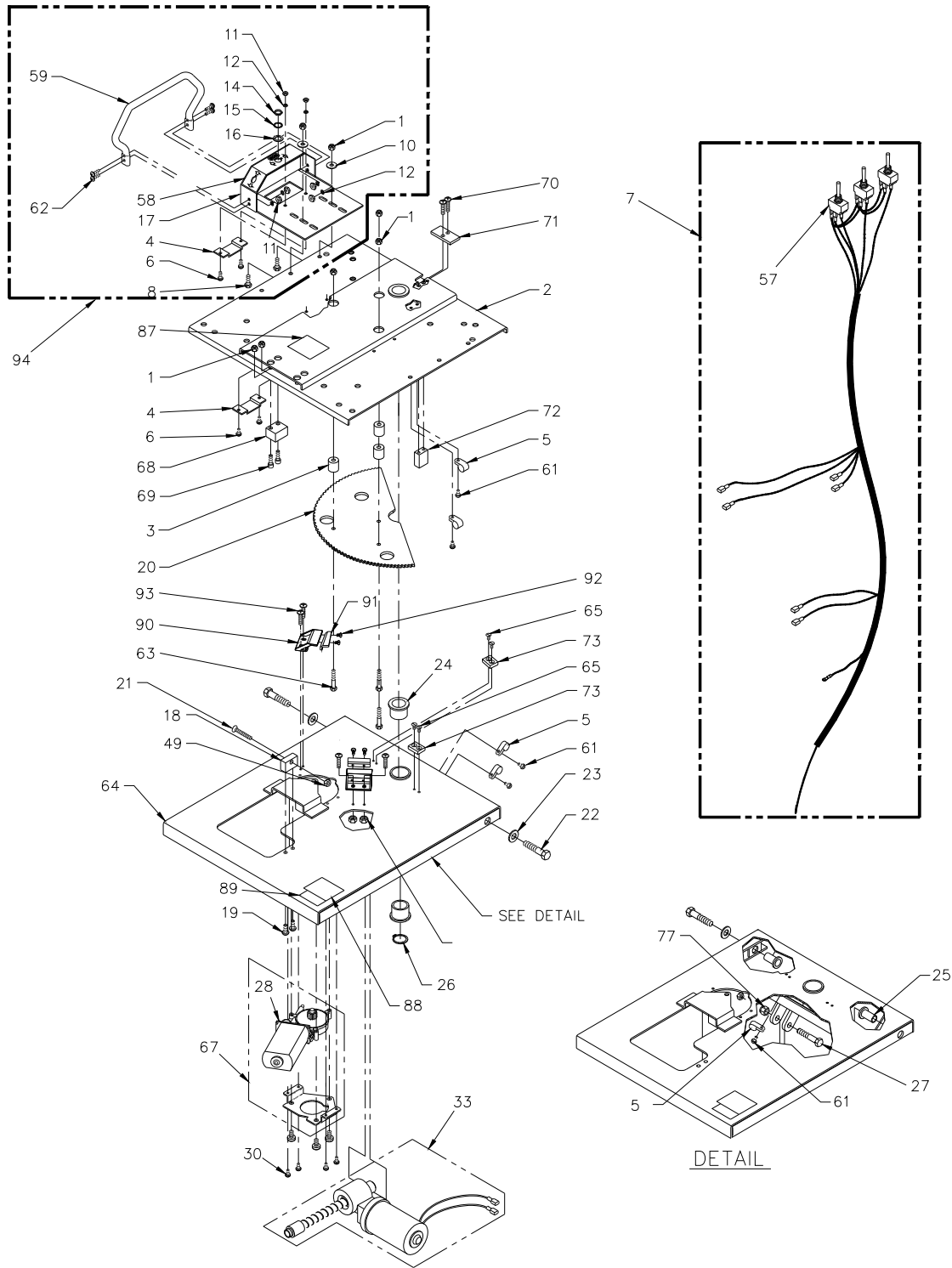


FIGURE 4-1: POWER SEAT BASE - UPPER

SIX WAY POWER SEAT BASE  
 ASSEMBLY  
 SERIAL NO's. 91685 and HIGHER

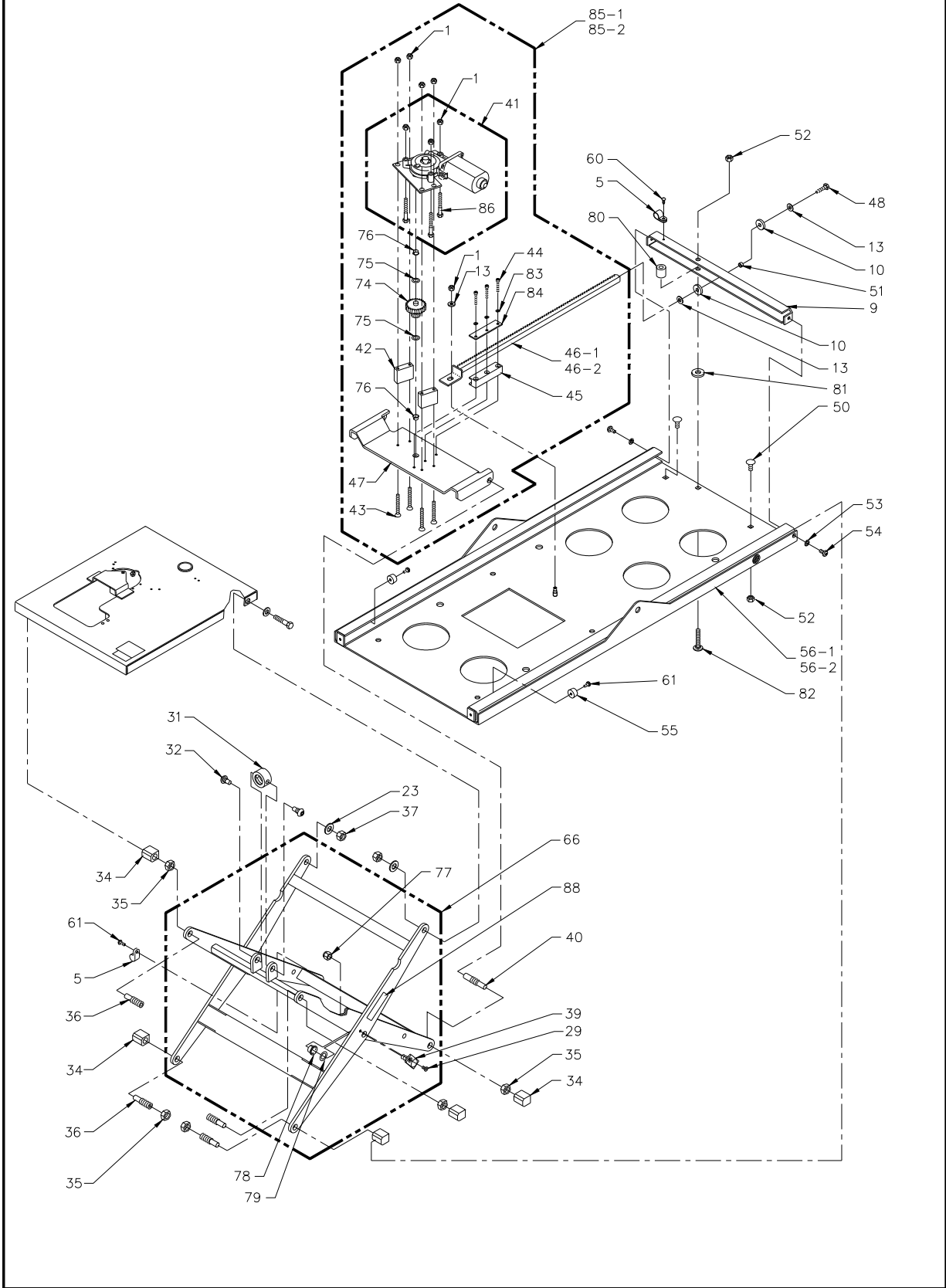


FIGURE 4-2: POWER SEAT BASE - LOWER

**SIX-WAY POWER SEAT BASE ASSEMBLY**  
**R 1209**  
**SERIAL NO'S. 91685 and HIGHER**

REF	DESCRIPTION	QTY	PART NO
1	NUT-HEX 1/4-20 NYLON INSERT (BAG OF 10)	12	15919
2	ASSY., WELD, SWIVEL PLATE	1	16018
3	SPACER, SWIVEL GEAR	3	PS-1124
4	CLAMP, FLAT PLASTIC	2	PS-1068
5	CLAMP, NYLON, 1/2" BLACK (BAG OF 10)	7	19774
6	SCREW, PHP, 10-24 X 1/4" (BAG OF 10)	4	45811
7	HARNESS, POWER SEAT BASE	1	PS-1069
8	SCREW, HEX, 1/4-20 X 3/4" GR5 (BAG OF 10)	2	13308
9	BAR-REAR FRAME	1	PS-2004
10	WASHER, FLT, .35 X .62 X .09 RBR (BAG OF 10)	2	19788
11	NUT-HEX 10-24 (BAG OF 10)	6	14489
12	WASHER #10 SPLIT LOCK (BAG OF 10)	6	15941
13	WASHER,FLT, .281 X .625 X .065 (BAG OF 10)	3	17504
14	NUT, TOGGLE, SWITCH, U-550 (BAG OF 10)	3	25639
15	WASHER, STAR, TGL, SWTCH, U-109 (BAG OF 10)	3	25638
16	LOCATING RING, TOGGLE SWITCH, U-108 (BAG OF 10)	3	15905
17	CONTROL BOX ASSY	1	PS-1051
18	STOP, SWIVEL-ADJUSTMENT (SEE KIT 01282)	1	PS-1205
19	SCREW, BHS, 1/4-20 X 5/8" (BAG OF 10)	2	45812
20	GEAR, SWIVEL-BASE PLATE (SEE KIT 01282)	1	PS-1112
21	MS 1/4-20 X 1 1/4 PHIL FLAT (BAG OF 10)	1	19762
22	SCREW, HEX, 7/16-14 X 2, GR 5 (BAG OF 10)	2	45813
23	WASHER, FLT, .469 X .922 X .065 (BAG OF 10)	4	19716
24	BEARING, BRONZE, 1620-16 FL 2402	2	25306
25	SPACER, FLANGED, UPPER FRAME	2	PS-0052
26	SNAP RING, EXTERNAL RETAIN 1"	1	15987
27	SCREW, HEX, 3/8-16 X 2 GR5 (BAG OF 10)	1	45814
28	MOTOR-DELCO PH3 MODIFIED	2	V2-ES-040
29	SCREW, FHS, 10-24 X 3/8" (BAG OF 10)	2	25343
30	SCREW, PHP, 8-32 X 1/4" (BAG OF 10)	11	25780
31	NUT, SCISSORS ACTUATOR (DISCONTINUED) (REFERENCE ONLY)	1	PS-1046
32	SCREW, SPECIAL, ACTUATOR NUT	2	PS-1059
33	ASSY, SCISSOR ACTUATOR	1	PS-1140
34	BEARING, SLIDE	6	PS-0031
35	NUT, JAM, 1/2-20 (BAG OF 10)	6	19758
36	PIN, SLIDE BEARING ADJUSTMENT X 1.50	4	PS-0032
37	NUT-HEX 7/16-14 (DISCONTINUED) (REFERENCE ONLY)	2	28336
39	STUD-WASSY	2	PS-2022
40	PIN, SLIDE BEARING ADJUSTMENT X 2.25	2	PS-0033
41	MOTOR DRIVE-ASSY (USE FOR S/N 77200 THRU S/N 500820)	1	PS-2046
41-1	MOTOR DRIVE-ASSY (USE FOR S/N 500821 AND ABOVE)	1	48497
42	BLOCK, STANDOFF	2	PS-2042
43	SCREW, FHP, 1/4-20 X 2" (BAG OF 10)	4	19796
44	SCREW, SHC, 8-32 X 1" BLK (BAG OF 10)	3	19797
45	GUIDE, WELD, RACK GEAR	1	PS-1009
46-1	GEAR, RACK-WASSY, STANDARD	1	PS-2037
46-2	GEAR, RACK-WASSY, EXTENDED	1	PS-2038
47	PLATE, HORIZONTAL DRIVE	1	PS-2041
48	BOLT-HEX 1/4-20 X 1 GR 5 (BAG OF 10)	1	14493
49	NUT, HEX, 1/4-20 (BAG OF 10)	1	25612
50	BOLT-CARRIAGE, 5/16-18 X 3/4L, GR5 PL (DISCONTINUED) (REFERENCE ONLY)	2	282293
51	STANDOFF-GEAR MOUNT	1	PS-2006
52	NUT, ESN, 5/16-18 (BAG OF 10)	3	13349
53	WASHER, SPL, 1/4" (BAG OF 10)	2	45815
54	SCREW, BHS, 1/4-20 X 1/2" BLK (BAG OF 10)	2	15985
55	BUMPER, RUBBER #315-009 (BAG OF 10)	2	19784
56-1	PLATE, FRAME-WASSY, STANDARD	1	16003
56-2	PLATE, FRAME-WASSY, EXTENDED	1	16070
57	SWITCH, TOGGLE, DPDT (4 TABS) OLD RGB/PSB	3	26433
58	DECAL, CONTROL PANEL PSB	1	26112
59	GUARD, SWITCH-SAFETY	1	PS-1052
60	SMS #8 X 1/2" PHIL PAN HD TEK (BAG OF 10)	1	15961
61	MS 10-24 X 3/8" PHIL PAN (BAG OF 10)	12	15944
62	SCREW, PHP, 10-24 X 5/8" (BAG OF 10)	4	28112
63	BOLT-HEX 1/4-20 X 1-1/2" GR5 (BAG OF 10)	3	25640
64	ASSY., WELD, UPPER FRAME	1	16065
65	SOCKET FLAT 10-24 X 3/8, SST (BAG OF 10)	4	15962

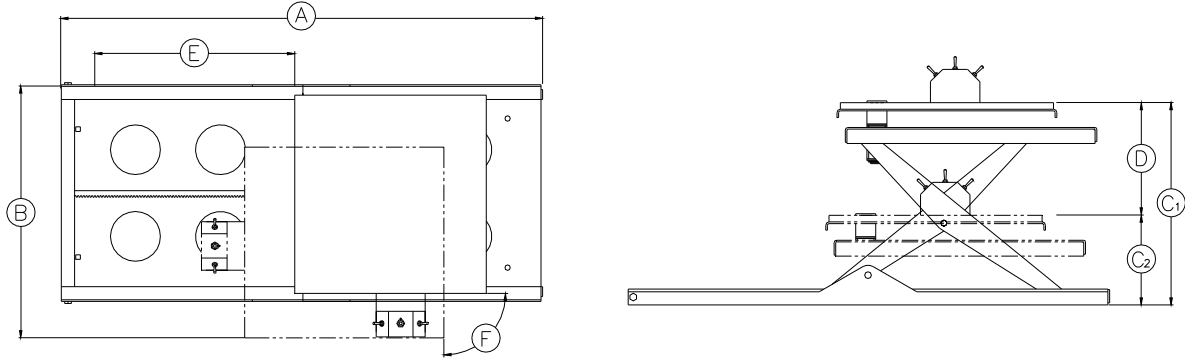
REF	DESCRIPTION	QTY	PART NO
66	ASSY, SCISSOR FRAME	1	16059
67	MOTOR, ASSEMBLY-UPPER (SEE KIT 01002)	1	PS-1106
68	STOP, SWIVEL, DELRIN BLOCK (SEE KIT 01006)	1	PS-1202
69	SOCKET CAP 1/4-20 X 0.75, (BAG OF 10) (SEE KIT 01006)	2	15972
70	SOCKET BUTTON HEAD SCREW BLK 1/4-20 X 1"	2	28183
71	PLATE, MOUNT-REAR BLOCK (SEE KIT 01282)	1	PS-1200
72	STOP, REAR BLOCK (SEE KIT 01282)	1	PS-1198
73	PLATE, REAR STOP (SEE KIT 01282)	2	PS-1199
74	GEAR, DRIVE	1	PS-2010
75	BEARING-THRUST .375 ID X .625 OD X .0585	2	25375
76	BEARING, DU FLG, 3/8" ID X 1/4"L	2	253845
77	NUT-HEX 3/8-16 NYLON INSERT (BAG OF 10)	3	15931
78	BEARING, DU FLG, 1/2" ID X 1/4"L	2	253846
79	WASHER, STEEL-0.508 I.D. X 0.749 O.D. X 0.045 THK (BAG OF 10)	2	25344
80	SPACER, REAR FRAME	1	10887
81	STANDOFF-BRIDGEPLATE ACTUATOR PIVOT	1	F9-0234
82	SCREW, CAR, 5/16-18 X 1 3/4" (BAG OF 10)	1	45816
83	WASHER, SPL, #8 (BAG OF 10)	3	15913
84	PLATE, STIFFENER, GEAR GUIDE	1	PS-2035
85-1	DRIVE, HORIZONTAL-ASSY - STD (SUPERSEDED)	1	PS-2047
85-1A	MOTOR/BACKET ASSY,HORIZONTAL DRIVE,W/SHOCK	1	48400
85-2	DRIVE, HORIZONTAL-ASSY EXT. (SUPERSEDED)	1	PS-2045
85-2A	MOTOR/BRKT ASSY,HRZNTL DRIVE,EXT,W/SHOCK	1	48496
86	SCREW, HEX, 1/4-20 X 1 1/4", SST (BAG OF 10)	3	25779
87	DECAL, UNPACKING INSTR, PSBASE	1	26203
88 *	DECAL, SERIAL#, "CE" UNIVERSAL	1	*
89	DECAL, PATENT# ; PENDING GENERIC	1	32-10-171
90	BRACKET, SWIVEL GUIDE	2	16021
91	BRACKET, INSERT SWIVEL GUIDE	2	UL-BA-021
92	SCREW, PHP, 10-24 X 1/2" (BAG OF 10)	4	13304
93	SCREW, HEX, 1/4-20 X 3/4" (BAG OF 10)	4	13308
94	KIT, REPLACEMENT, ASSY, SWITCH BOX, PSB	1	17707
**	CIRCUIT BREAKER, 20A	1	26400

\* Decal is in two parts, and is replaceable only by Ricon.

\*\* Not shown

## APPENDIX 1 R1209 POWER SEAT BASE SPECIFICATIONS

Power ..... Electro-Mechanical  
 Motor Rating - Vertical ..... 12 Volt DC, 16 Amp avg./cycle  
 Motor Rating - Horizontal ..... 12 Volt DC, 9 Amp avg./cycle  
 Motor Rating - Swivel ..... 12 Volt DC, 5 Amp avg./cycle  
 Rated Load Capacity ..... 300 Pounds  
 Seat Base Weight ..... 95 lbs.



REF	A	B	C <sub>1</sub>	C <sub>2</sub>	D	E	F
<b>DIMENSIONS (inches)</b>							
Product	Length	Width	Height, Highest Position	Height, Lowest Position	Vertical Travel	Forward/Reverse Travel	Swivel
R1209	36.25	16.31	13.43	6.25	8.25	13.63	172 degrees (90 deg right and 82 deg left)