



**INSTALLATION INSTRUCTIONS
CAM RETROFIT KIT # 01287**

- Be certain that these supplemental instructions are read and understood completely before installation is attempted. You should also refer to the Service/Owner Manual for additional installation instructions and safety precautions.
- Check contents of this kit and notify Ricon immediately of any missing parts. Claims for damages that have occurred during shipping must be made to the carrier.

TABLE OF CONTENTS	PAGE
I. INTRODUCTION	1
II. INSTALLATION	1

I. INTRODUCTION

This document outlines the step-by-step procedure for retrofitting the old style cam assembly with the new style cam assembly.

II. INSTALLATION

- A. Deploy lift to the ground and disconnect all power to the lift.
- B. Remove pump cover by removing the three 3/16 hex bolts **Figure [1]**.

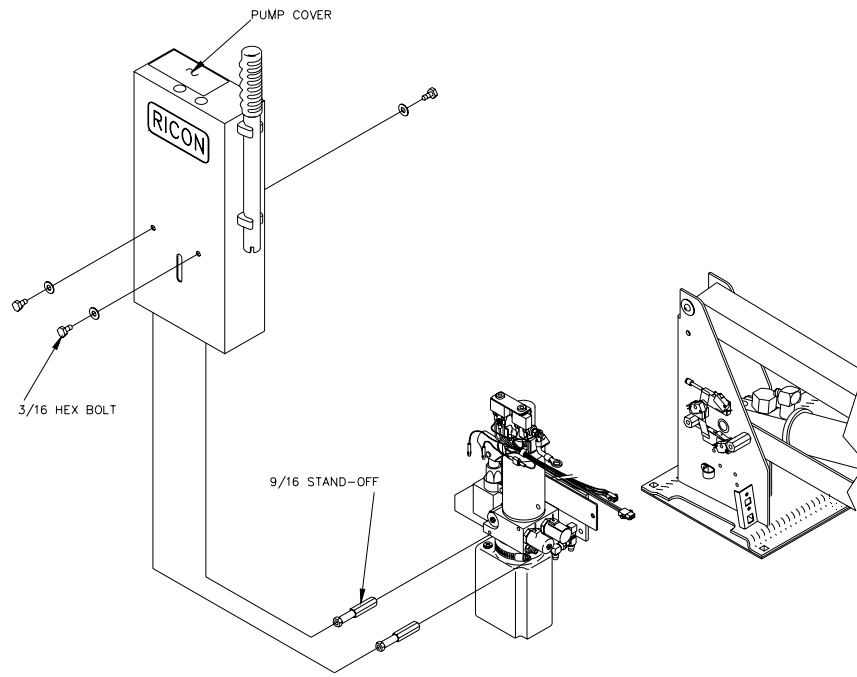


FIGURE [1]

C. Detach and set aside the pump assembly by removing the 9/16 standoffs **Figure [1]**.

NOTE: Complete removal of the Hydraulic line on the pump assembly is not required.

D. Loosen the center limit switch. Remove the right-hand screw and rotate the limit switch upward **Figure [2]**.

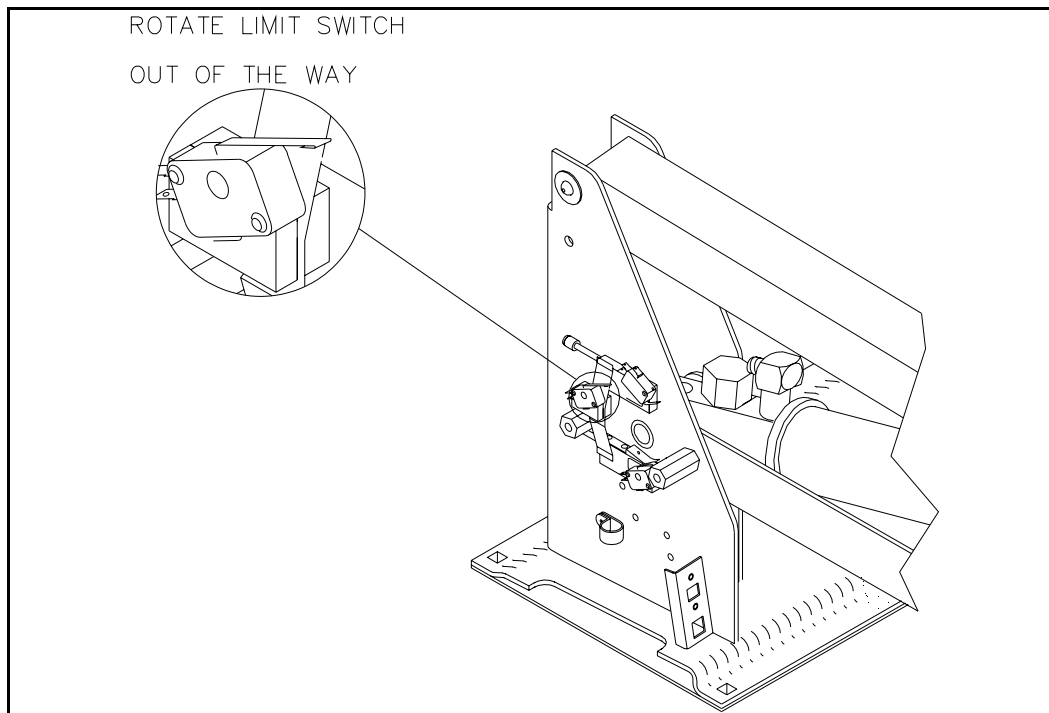


FIGURE [2]

E. Remove the two socket cap screws on the cylinder **Figure [3]**.

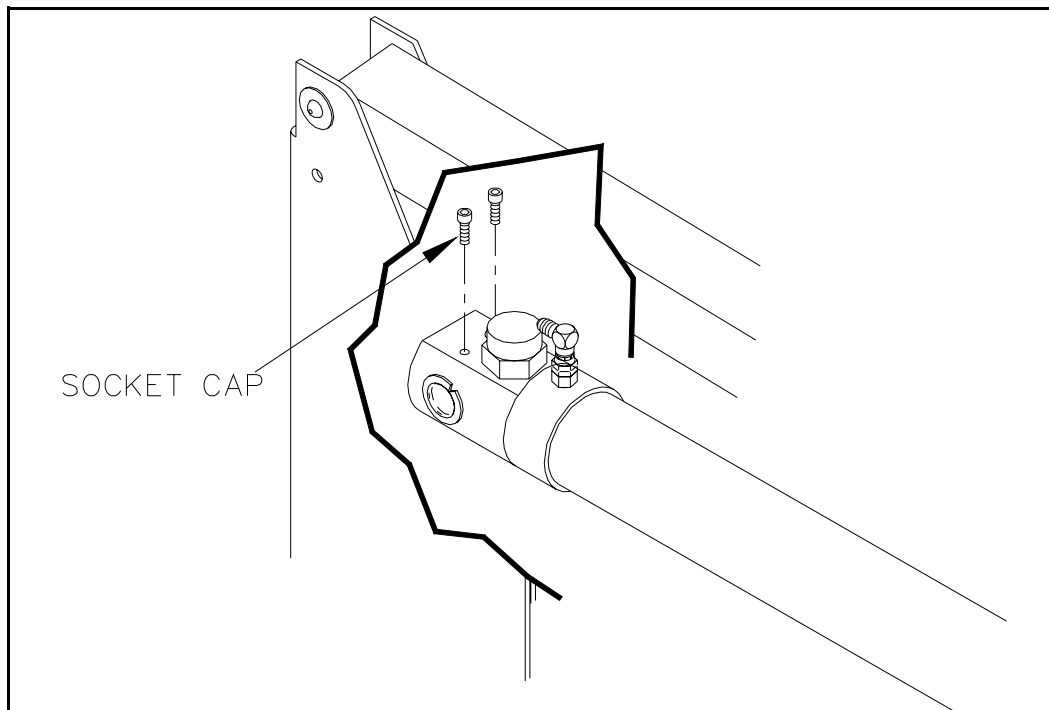


FIGURE [3]

F. Remove the socket button on the end of the pin **Figure [4]**.

G. Drive the old pin assembly out by aligning the new supplied pin on the old assembly and using a rubber hammer to drive it out **Figure [4]**.

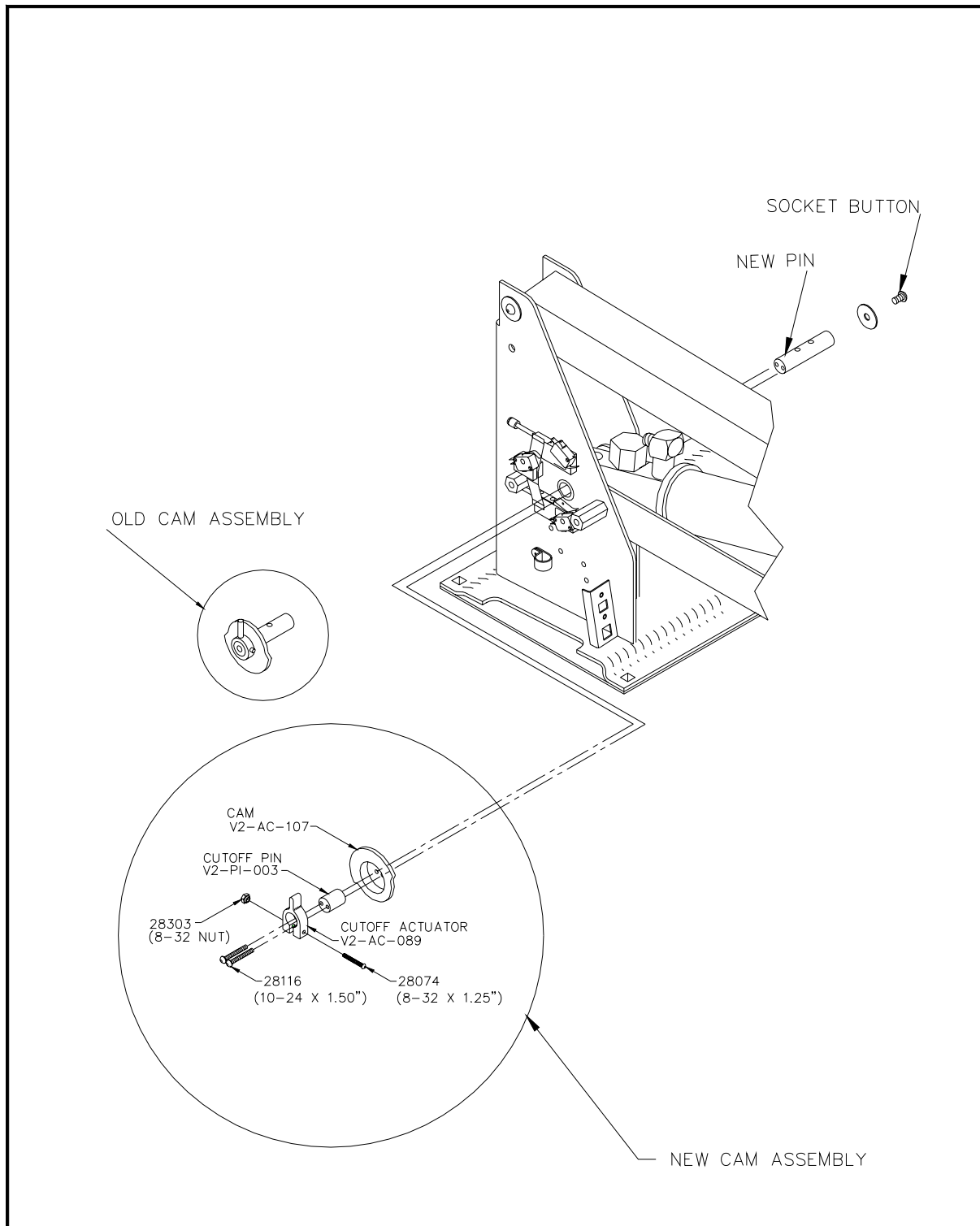


FIGURE [4]

- H. Align the two holes on the new pin with the two holes on the cylinder and insert the two socket cap screws removed in step "E" through the pin and the cylinder **Figure [3]**.
- I. Fasten the previously removed socket button and washer to the end of the pin **Figure [4]**.
- J. Place and align the new cam assembly on the pin and attach the fold cutoff pin to it using the supplied 10-24 screws **Figure [4]**.
- K. Place/attach the fold cutoff actuator around the fold cutoff pin using the supplied 8-32 hardware **Figure [4]**.
- L. Replace and attach the pump to its original location using the stand-offs **Figure [1]**.
- M. Adjust the following settings (Refer to your Service/Owner Manual as needed):
 - 1. Fold cut off adjustment.
 - 2. Floor level adjustment.
- N. Replace and fasten the pump cover using the 3/16 bolts previously removed **Figure [1]**.