



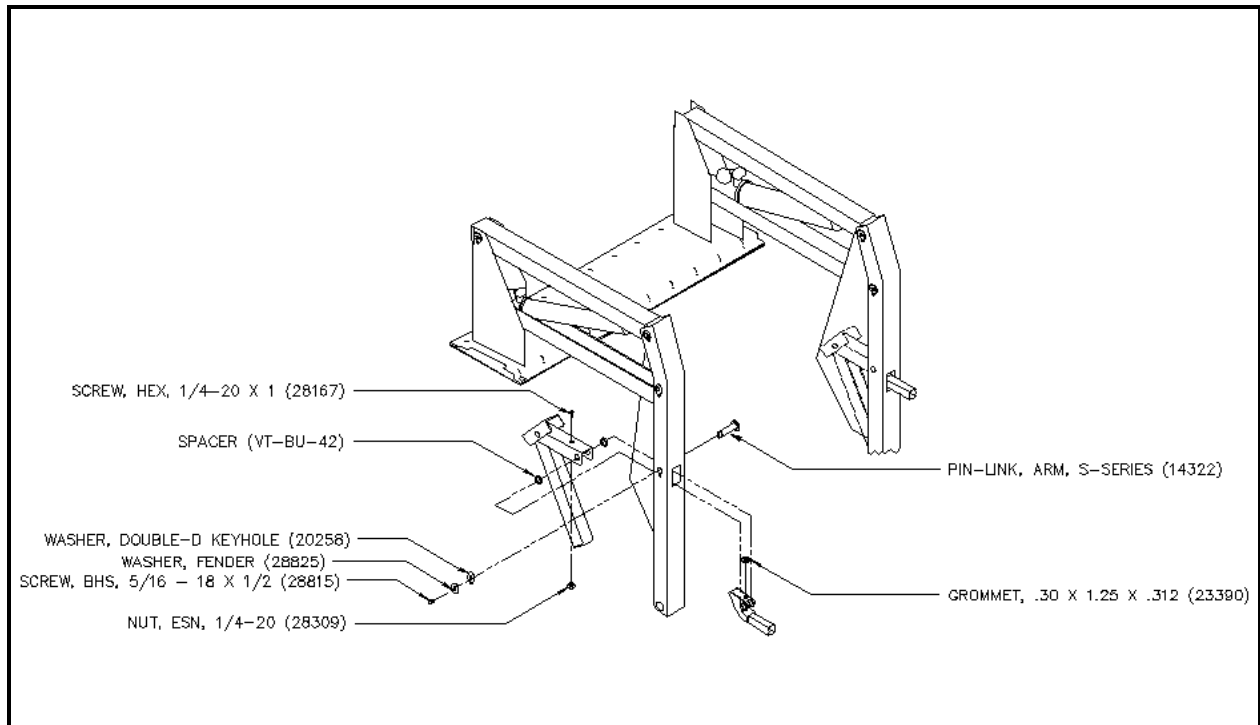
**INSTALLATION INSTRUCTIONS
INSTALLATION KIT
RETROFIT PIN-LINK ARM; S-SERIES # 16679**

Be certain that these supplemental instructions are read and understood completely before installation is attempted. You should also refer to the Service/Owner Manual for additional installation instructions and safety precautions.

Check contents of documentation package and notify Ricon immediately of any missing items. Claims for damages that have occurred during shipping must be made to the shipper.

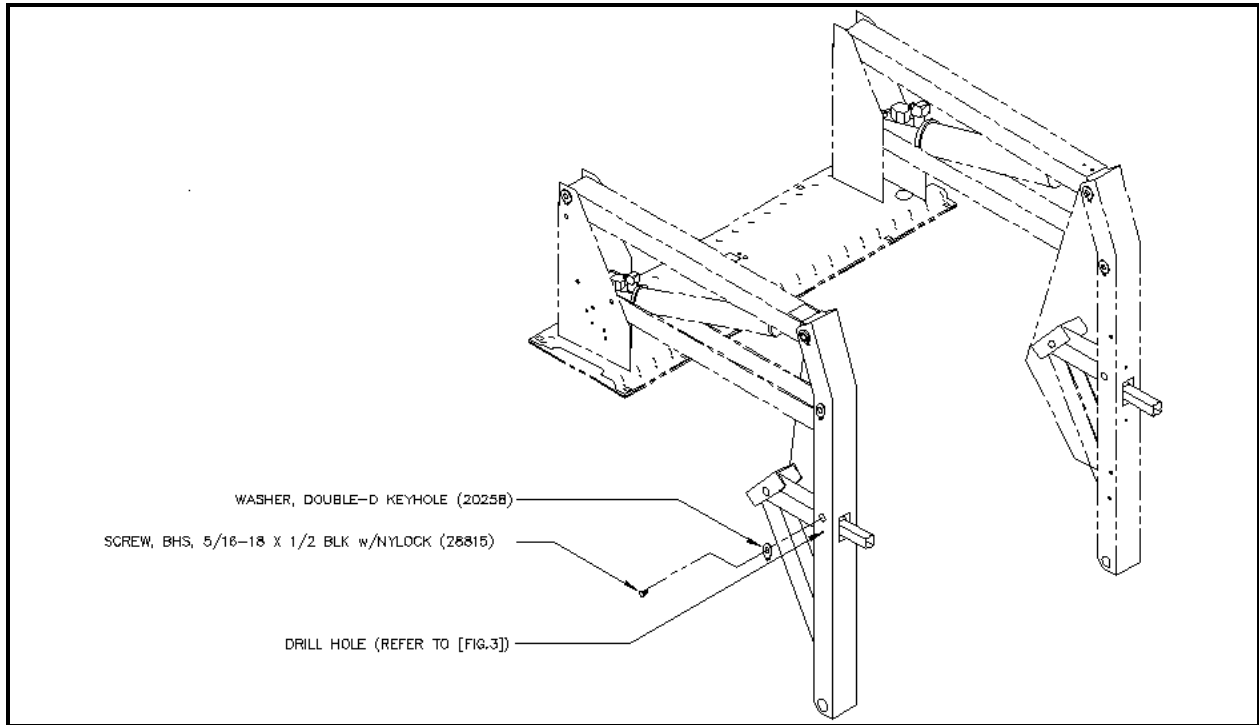
I. INSTALLATION

1. For all models of S-Series Lifts serial number 108270 and below follow these instructions.



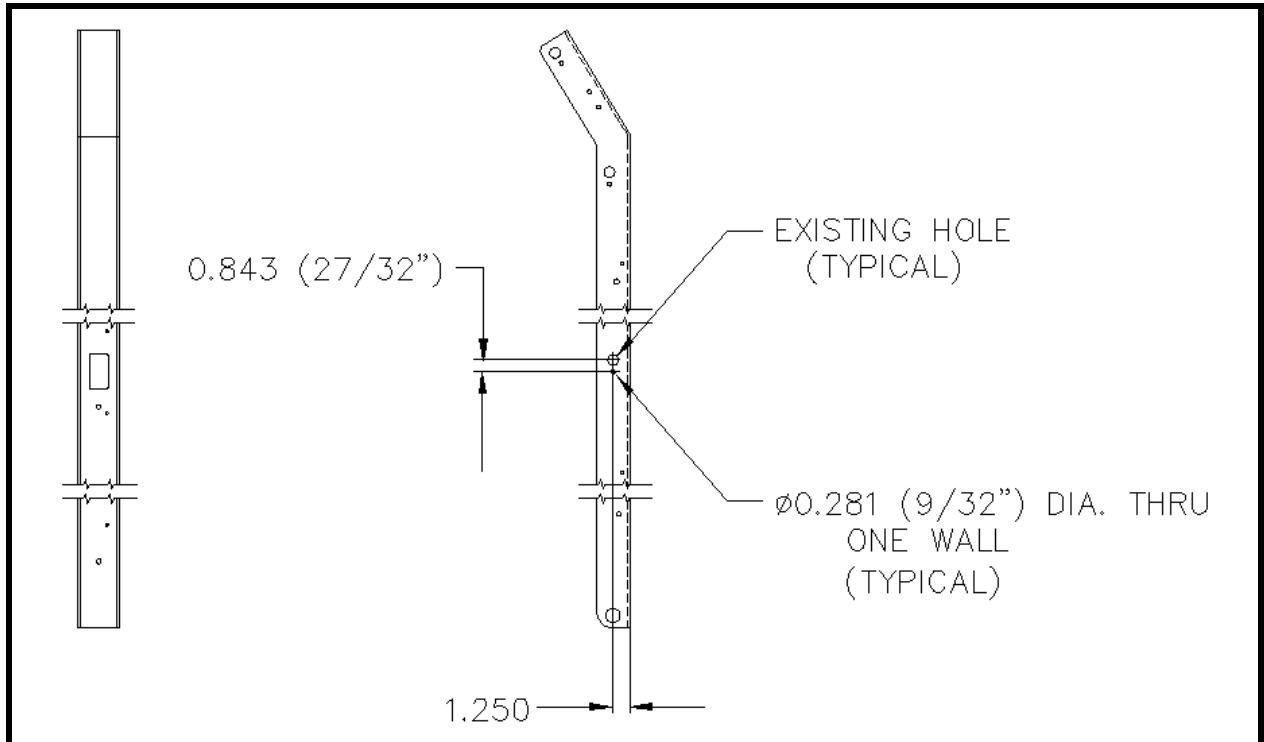
[FIG.1] KIT COMPONENT(S) IDENTIFICATION DIAGRAM

- LEFT-HAND ARM SHOWN IN EXPLODED VIEW. THE RIGHT-HAND ARM NOT EXPLODED FOR CLARITY, AND IS IDENTICAL TO THE LEFT-HAND ARM.
- PIN-LINK (P/N 14322) AND WASHER, DOUBLE-D KEYHOLE (P/N 20258) REQUIRES ONE DRILL HOLE TO COMPLETE THE RETROFIT PROCESS. REFER TO [FIG.2] FOR DETAILS.



[FIG.2] DRILL HOLE(S) DIAGRAM

- **DIAGRAM ABOVE SHOWS DRILL HOLE (S) REQUIRED (ONE HOLE EACH FOR LEFT AND RIGHT ARM.)**
- **REFER TO DETAIL [FIG.3] FOR TYPICAL LOCATION OF HOLE CENTER.**



[FIG.3] LEFT-ARM DRILL-HOLE DETAIL DIAGRAM (TYPICAL)

- DRILL ONE 0.281 DIAMETER HOLE THRU LEFT ARM WALL AS SHOWN ABOVE.
- REPEAT PROCESS FOR RIGHT-HAND ARM.

II. PROCEDURE FOR PIN, LINK-ARM REMOVAL

1. DEPLOY LIFT AND LET PLATFORM REST AT GROUND LEVEL. REFER TO SERVICE/ OWNER MANUAL FOR FURTHER SAFETY PRECAUTIONS.
2. REMOVE SCREW (5/16 –18 X ½, BLACK) FROM EXISTING PIN, LINK ARM.
3. THREAD INTO PIN, LINK-ARM THE PIN-GUIDE EXTENSION TOOL SUPPLIED IN KIT.
4. DRIVE PIN, LINK-ARM OUT USING PIN-GUIDE EXTENSION AND A HAMMER.

III. PROCEDURE FOR PIN, LINK-ARM INSTALLATION

1. THREAD INTO PIN, LINK-ARM THE PIN-GUIDE EXTENSION TOOL SUPPLIED IN KIT.
2. USE THE EXTENSION TOOL TO GUIDE THE PIN BACK THROUGH THE HOLES IN THE ARM.
3. REPLACE THE SCREW (28815) INTO THE PIN, LINK-ARM. USE THREADLOCK COMPOUND SUCH AS LOC-TITE.

NOTES