

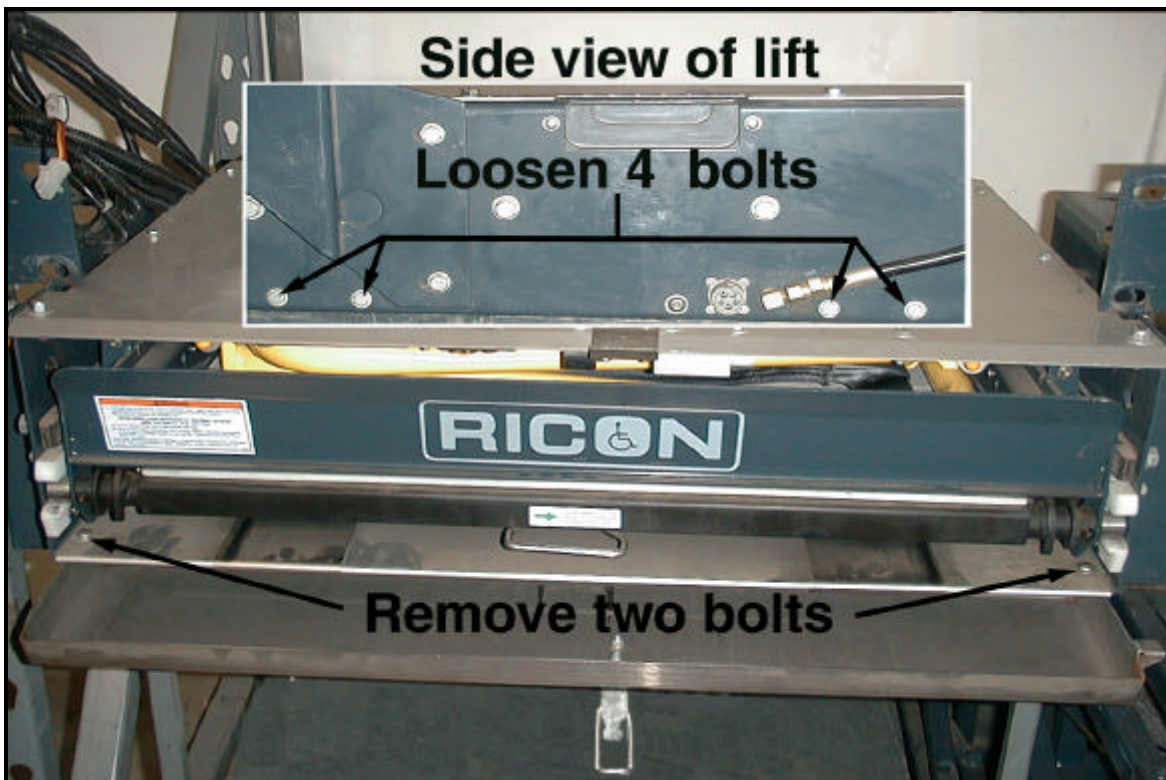


**INSTALLATION INSTRUCTIONS  
INSTALLATION KITS # 10817, # 22245 & # 22246  
REPLACEMENT BUCKLE RETRACTOR, F8000 AND F9**

- Be certain these supplemental instructions are read and understood completely before installation is attempted. You should also refer to Service/Owner Manual for additional installation instructions and safety precautions.
- Check contents of this kit. Notify Ricon immediately of any missing parts. Claims for damages or shortages that have occurred during shipping must be made to freight carrier.

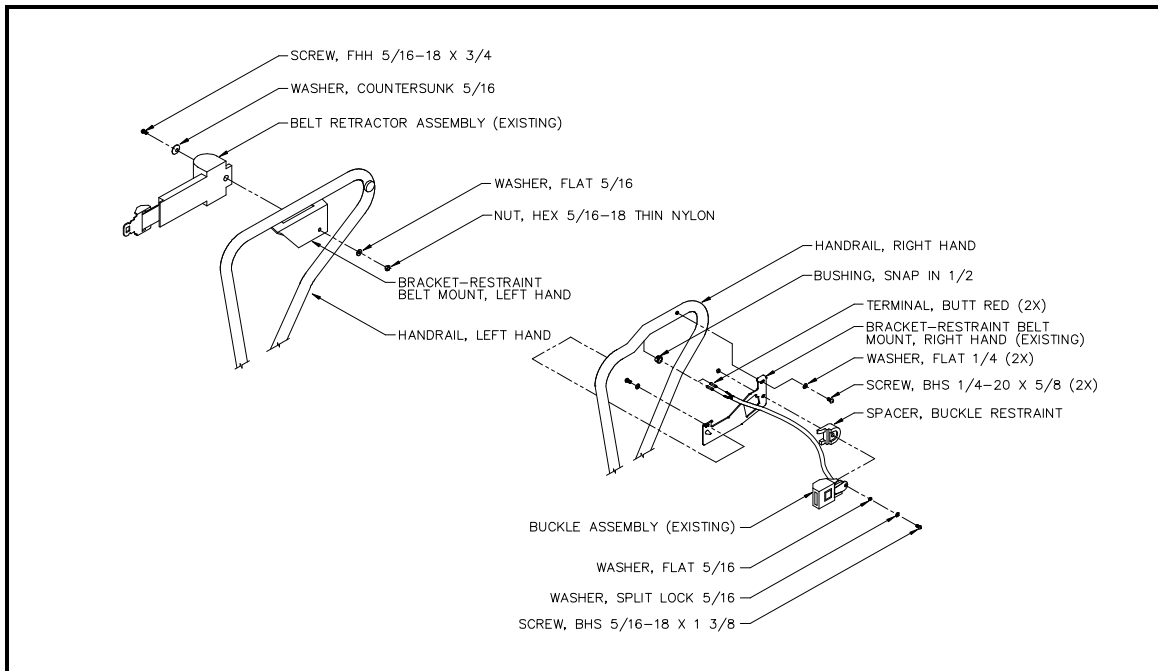
**Eclipse F8000**

**I. Removal of Am-safe assembly.**

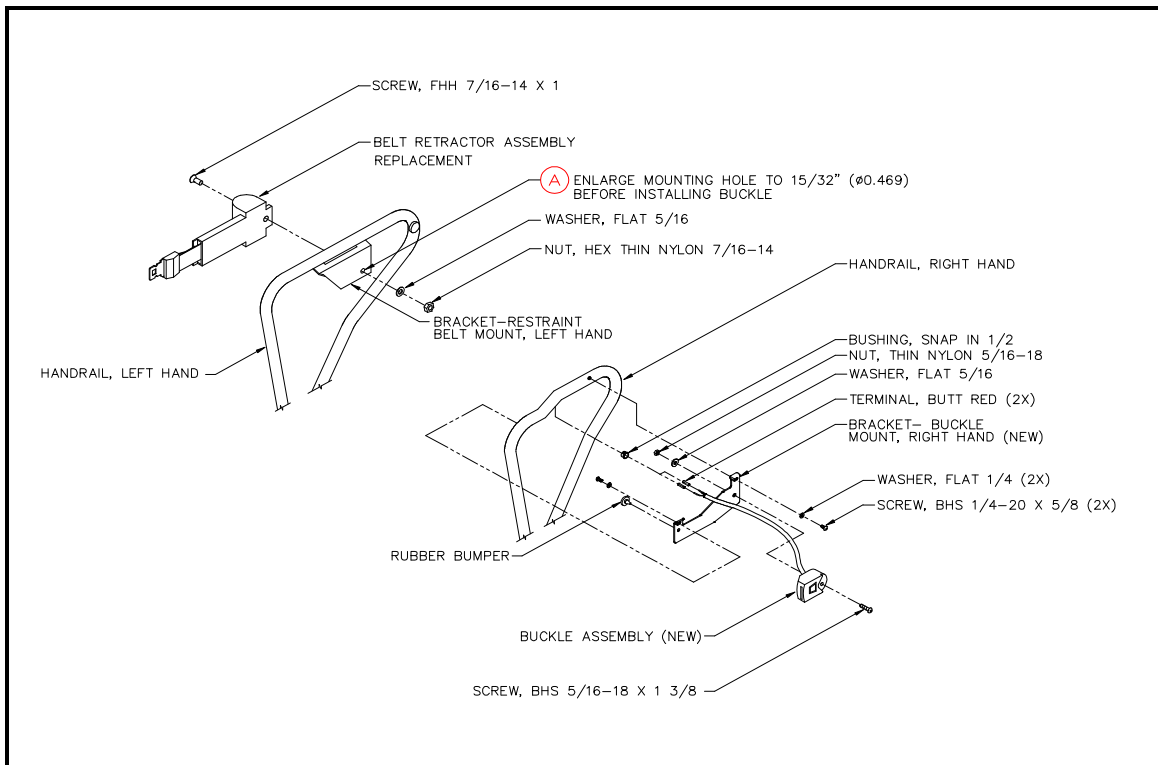


**FIG [1]: BOTTOM COVER DETAIL**

- REMOVE THE TWO BOLTS FROM THE BOTTOM COVER.
- LOOSEN 4 BOLTS ON LEFT AND RIGHT SIDE OF LIFT.
- REMOVE BY PULLING COVER OUTWARDS. SET COVER ASIDE.

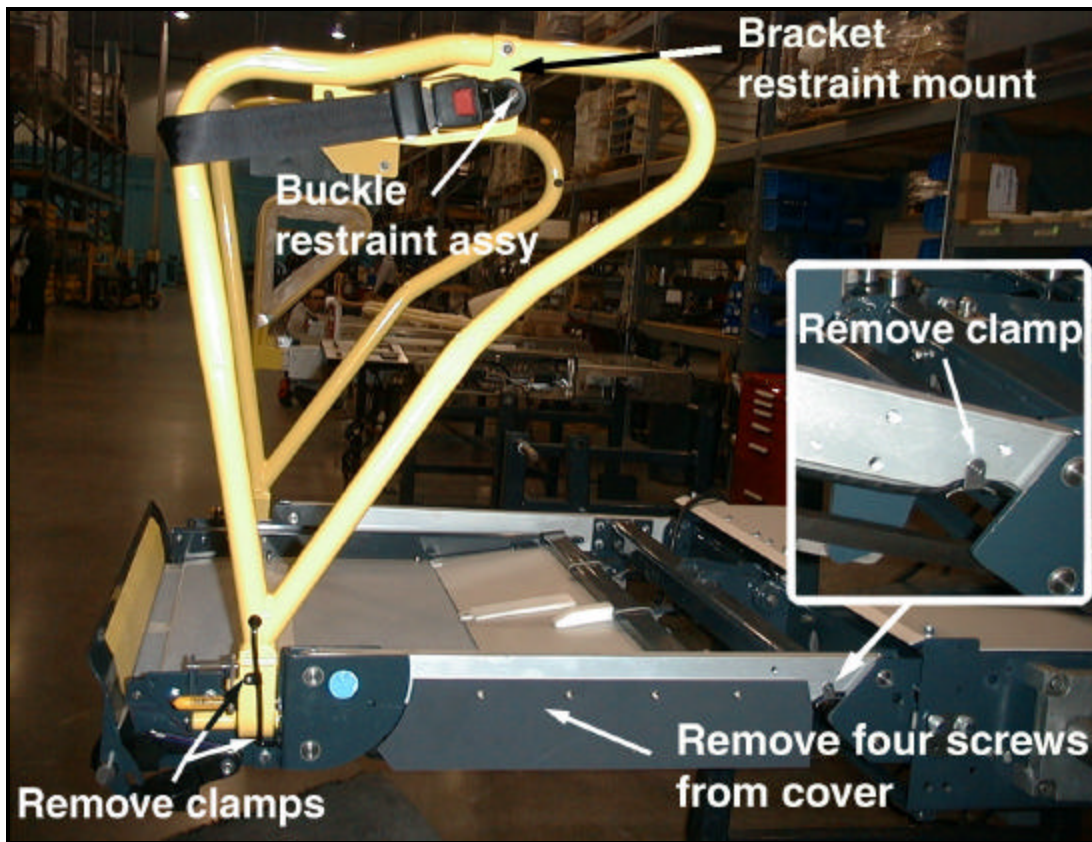


**FIG [2]: ECLIPSE FOLDING HANDRAIL WITH EXISTING RESTRAINT BUCKLE**



**FIG [3]: DETAIL HOLE 'A'**

- BEFORE ATTACHING REPLACEMENT RETRACTOR, MOUNTING HOLE 'A' MUST BE ENLARGED TO 15/32".**



**FIG [4]: BUCKLE RESTRAINT ASSEMBLY DETAIL**

- REMOVE BUCKLE ASSEMBLY FROM (LEFT) HANDRAIL. REFER TO FIG [2].
- INSTALL BUCKLE RETRACTOR ASSEMBLY TO LEFT HANDRAIL. REFER TO FIG [3].
- REMOVE BUCKLE RESTRAINT ASSEMBLY. CUT WIRE AT BUCKLE. REFER TO FIG [2] AND FIG [4].
- REMOVE BRACKET RESTRAINT MOUNT. REFER TO FIG [2] AND FIG [4].
- REMOVE COVER AND CLAMP FROM RIGHT SIDE OF PLATFORM. REFER TO FIG [4].
- REMOVE TWO CLAMPS FROM HANDRAIL. REFER TO FIG [4].

## II. Installation of existing restraint buckle.

- INSTALL REPLACEMENT RETRACTOR ASSEMBLY TO HANDRAIL. REFER TO FIG [3].
- INSTALL REPLACEMENT BRACKET RESTRAINT MOUNT. REFER TO FIG [3].
- TAPE TOGETHER THE HARNESS FROM REPLACEMENT BUCKLE RESTRAINT ASSEMBLY TO WIRES THAT WERE PREVIOUSLY CUT.
- PULL WIRES THROUGH BOTTOM OF HANDRAIL. ATTACH BUCKLE RETRACTOR ASSEMBLY.
- REMOVE EXISTING WIRE FROM REPLACEMENT BUCKLE ASSEMBLY.

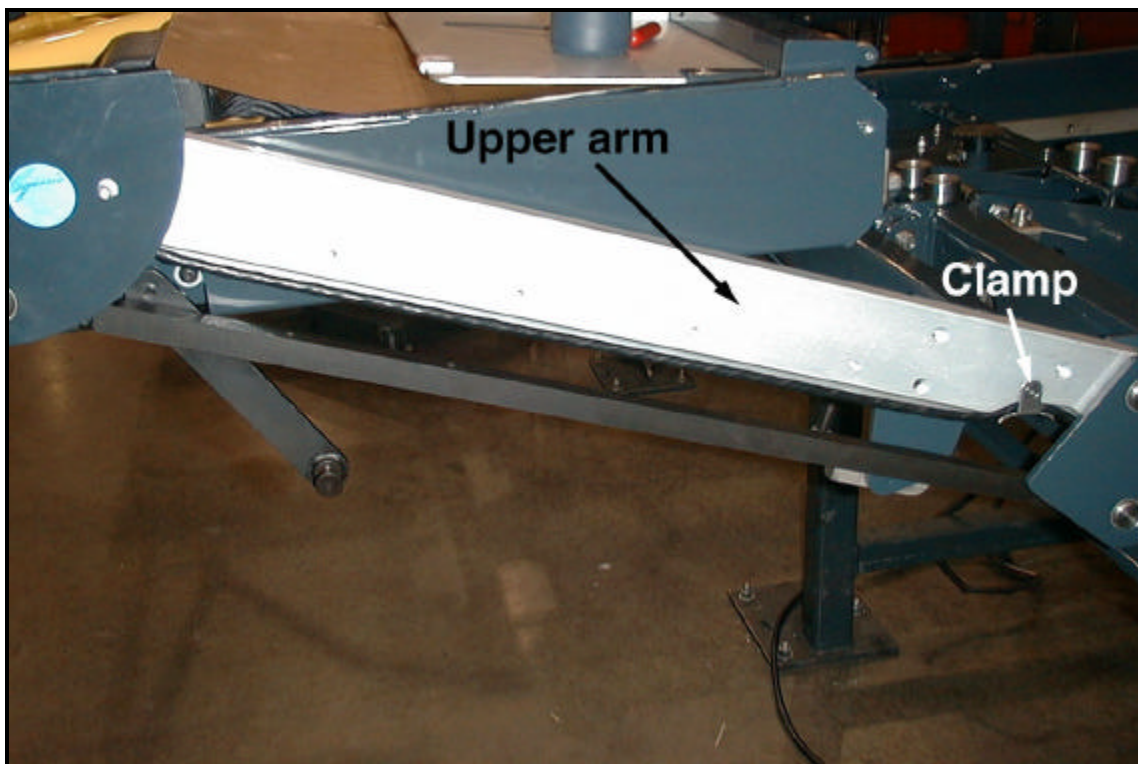
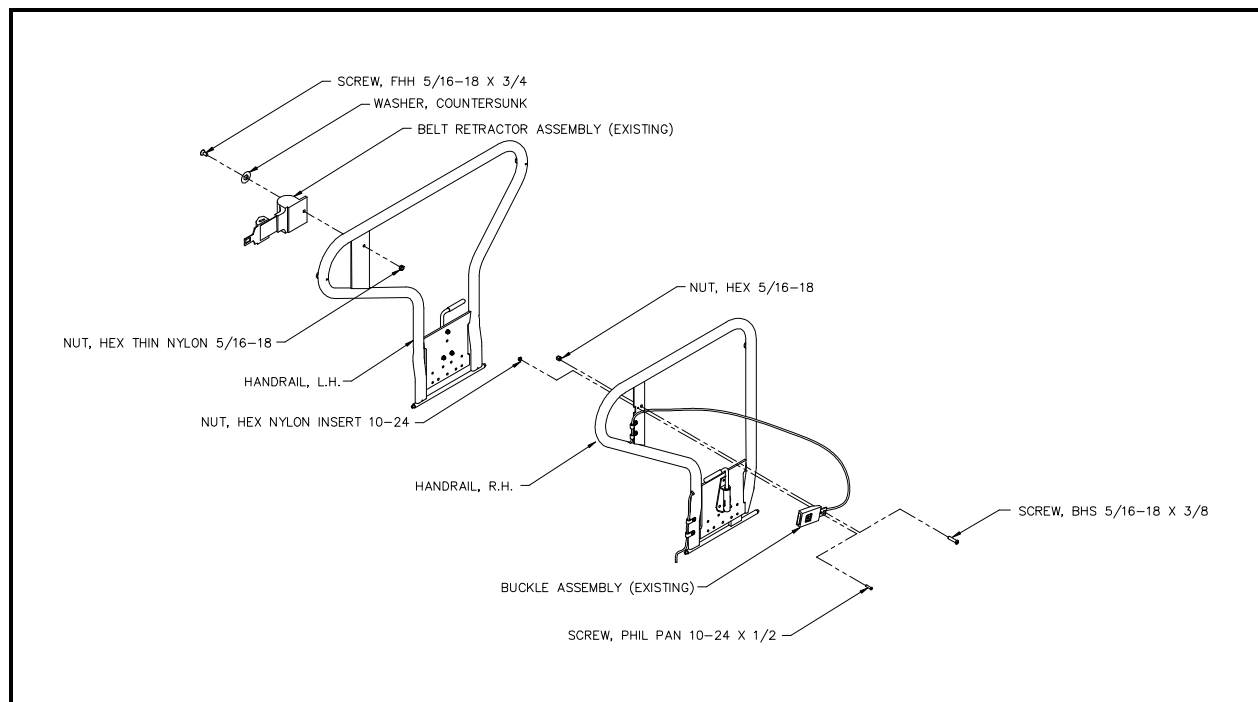


FIG [5]: UPPER ARM DETAIL SHOWING CLAMP ORIENTATION

- ROUTE WIRE IN GROOVE ON UPPER ARM.
- INSTALL CLAMP BEING CAREFUL NOT TO PINCH WIRE.
- REMOVE EXISTING WIRE FROM TRAVELING FRAME AT BUTT CONNECTORS.
- CONNECT REPLACEMENT WIRE WITH BUTT CONNECTORS. TIE WRAP WIRES AS NEEDED.
- INSTALL COVER AND WIRE CLAMPS.
- CHECK OPERATION OF LIFT.
- INSTALL BOTTOM COVER.

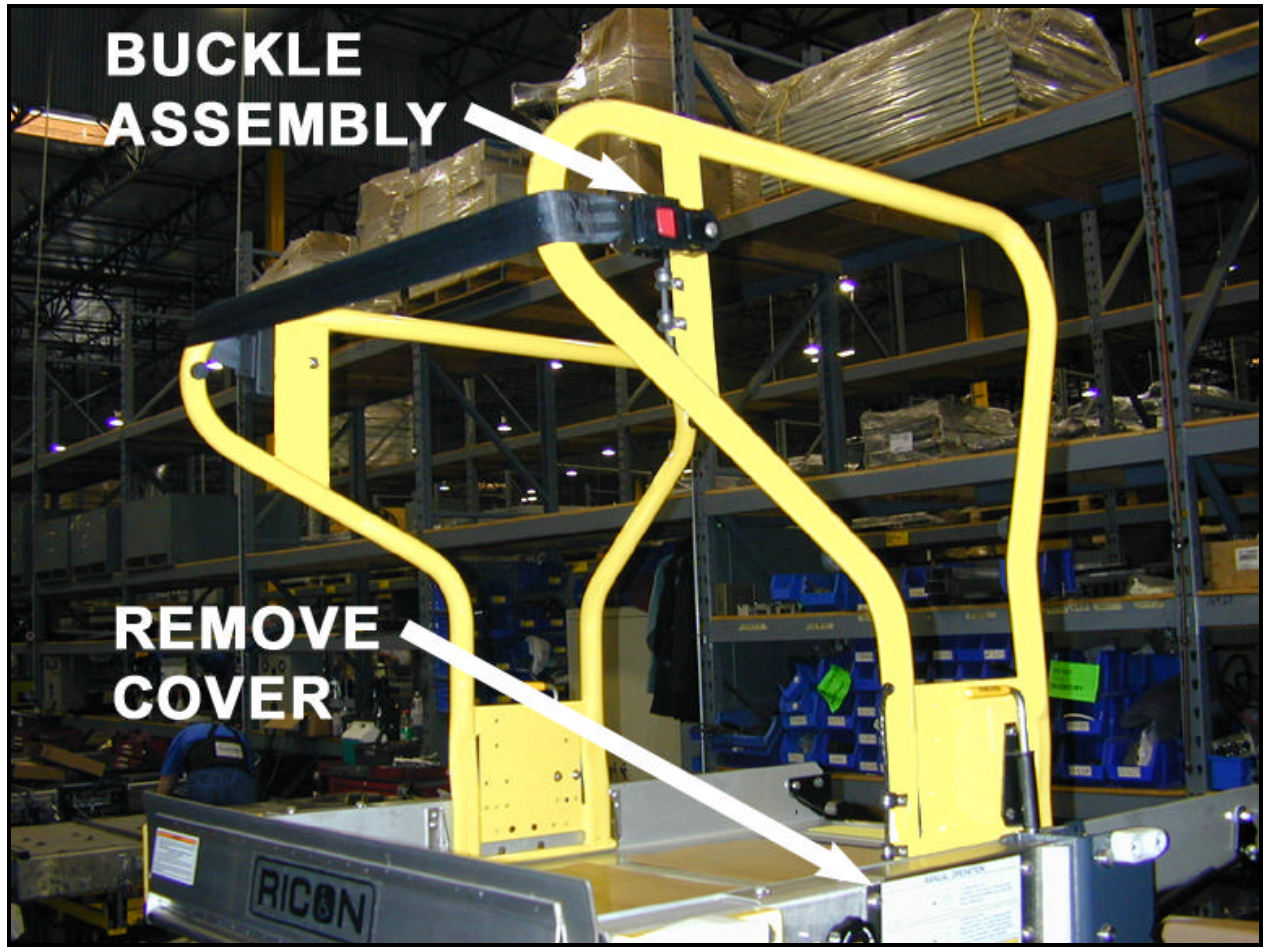
## F9000 MIRAGE



**FIG [6]: HANDRAIL WITH BENDIX BUCKLE**

- REMOVE EXISTING BUCKLE RETRACTOR AND BUCKLE ASSEMBLIES.
- REFER TO FIG [7], FIG [8] AND FIG [9] FOR BUCKLE RESTRAINT WIRE ROUTING.





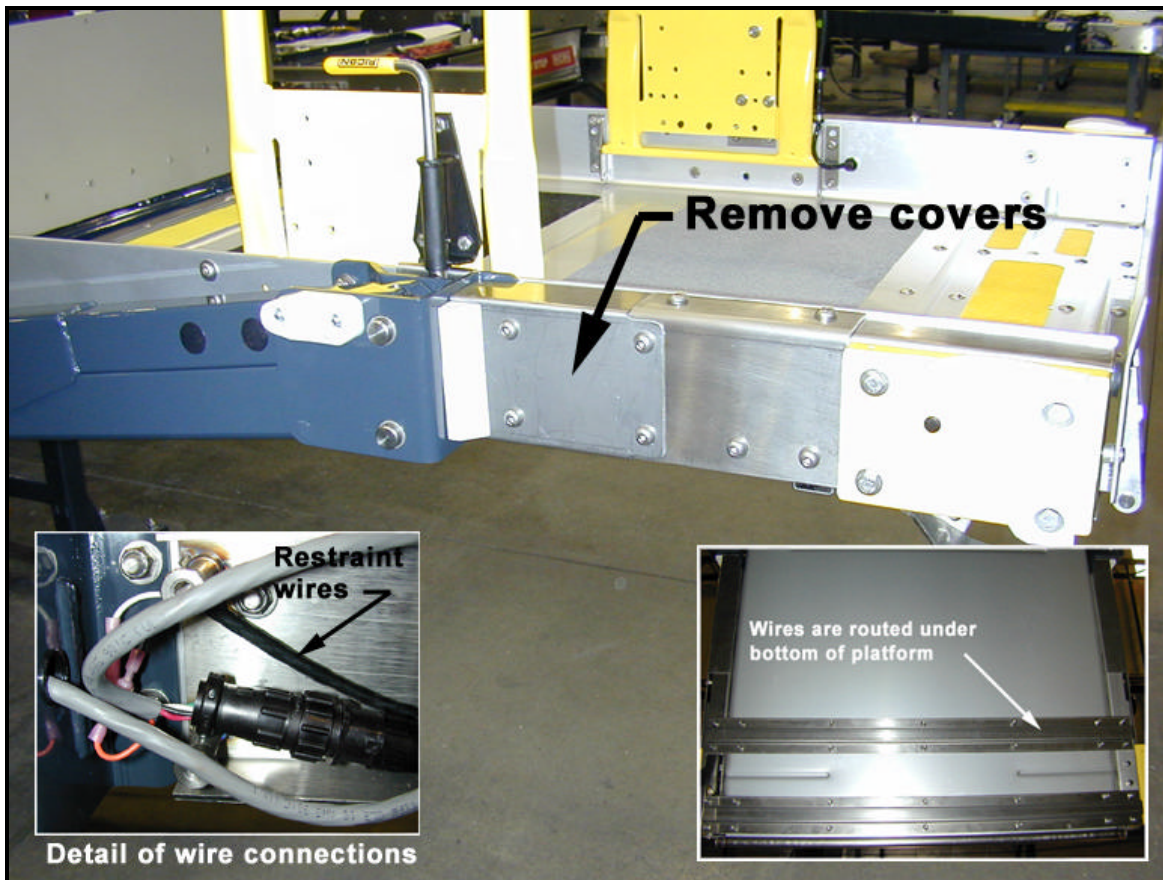
**FIG [7]: COVER DETAIL**

- **REMOVE COVER TO GAIN ACCESS FOR WIRE HARNESS.**



**FIG [8]: WIRE CLAMP DETAIL**

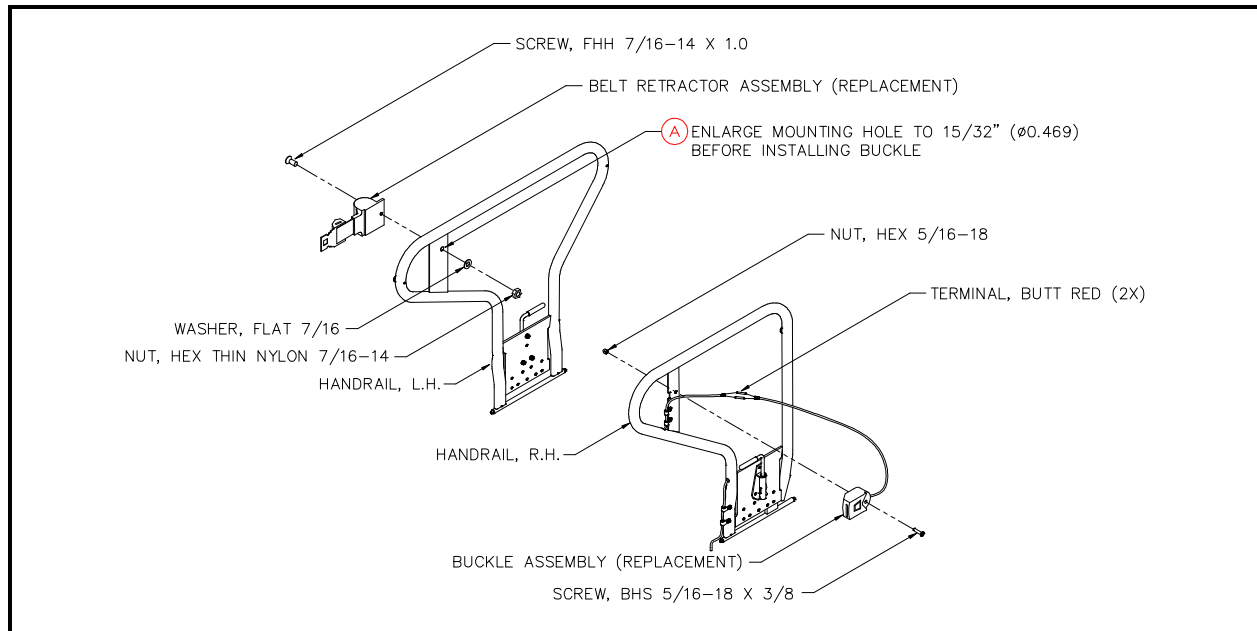
- **REMOVE WIRE CLAMPS. SAVE FOR USE WITH REPLACEMENT BUCKLE ASSEMBLY.**



**FIG [9]: COVER REMOVAL DETAIL**

- **REMOVE COVER SHOWN IN ABOVE PHOTO.**
- **DISCONNECT WIRES. SEE DETAIL ABOVE. REMOVE EXISTING BUCKLE RETRACTOR.**





**FIG [10]: HANDRAILS WITH REPLACEMENT BUCKLES**

- **BEFORE ATTACHING REPLACEMENT RETRACTOR, MOUNTING HOLE 'A' MUST BE ENLARGED TO 15/32". REFER TO FIG [10]. INSTALL REPLACEMENT RETRACTOR.**
- **INSTALL REPLACEMENT BUCKLE ASSEMBLY. ROUTE ITS WIRE IN SAME FASHION AS ORIGINAL.**
- **WIRE CONNECTIONS.**
- **INSTALL ALL COVERS AND TIGHTEN.**

## NOTES: