



INSTALLATION INSTRUCTIONS FOR INSTALLATION OF GUIDE BLOCKS INSTALLATION KIT # 35708

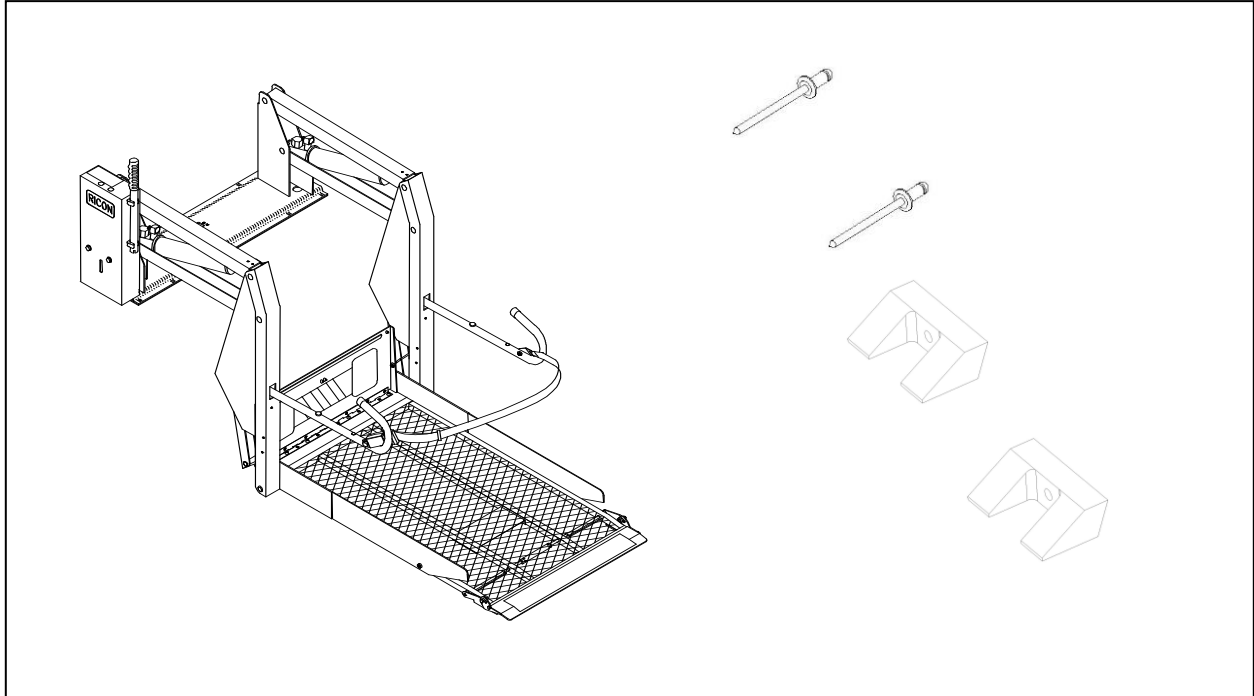


Figure 1

The installation kit should include the following items:

Quantity	Description	Ricon Part #
1	INSTALLATION, INSTRUCTIONS	32ii386e
2	GUIDE BLOCK, INNER ROLLSTOP	34343
2	RIVET, BLIND, 3/16" X 1.024, PEEL-TYPE	36702

The following tools are required to complete this installation:

Quantity	Description
1	Rivet gun
1	Drill motor
1	3/16" drill bit

- The following instructions assemble two guide blocks (p/n 34342) to the lift baseplate.

1. Refer to **Figure 2**. The figure shows where the guide blocks are mounted on the baseplate.

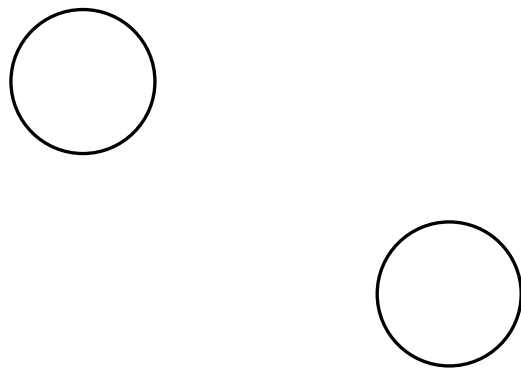


Figure 2

2. Deploy platform and lower until it is at floor level level.

3. Refer to **Figure 3**. Measure 9" from the right edge of the square hole and mark this location on the front face of baseplate.

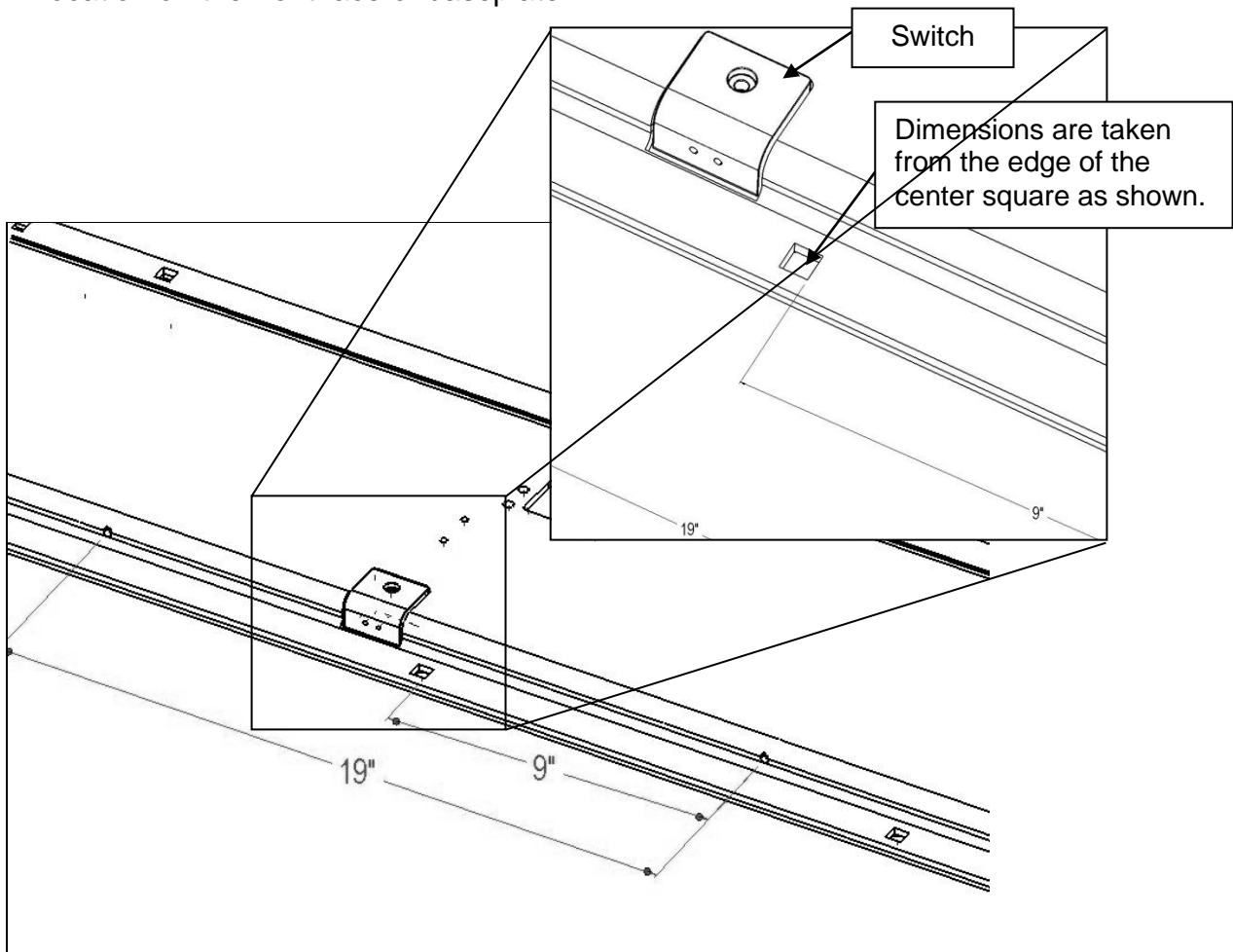


Figure 3

4. Measure 19" to the left of the first mark and mark a second location.
5. Refer to **Figure 4**. Place a guide block so that its hole lines up with the first mark. Press block down against horizontal face and up against front face of baseplate. Transfer center of guide block hole to baseplate. Repeat for second mark.

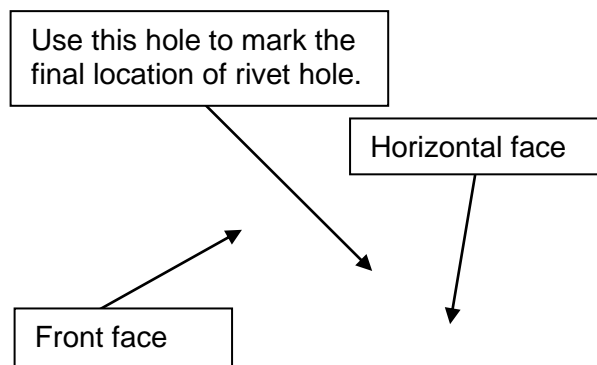


Figure 4

6. Centerpunch both locations and drill with a 3/16 drill bit.

7. Refer to **Figure 5**. Use rivets to fasten the guide blocks to baseplate.

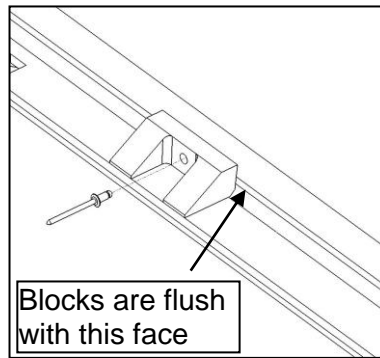


Figure 5

8. Refer to **Figure 6**. Final items to check for:

- a. Make sure that the blocks are resting flush on the horizontal face of the baseplate.
- b. Make sure that the front edge of the blocks do not protrude more than 1/8" beyond the baseplate edge.

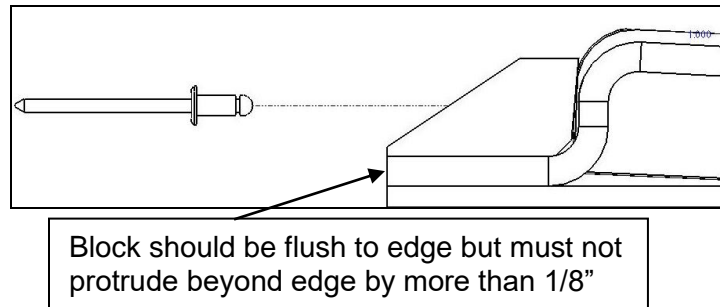


Figure 6