



INSTALLATION INSTRUCTIONS RI21851
TAB, STOW-LOCK BLOCK RAMP / CATCH BASE LATCH

- Be certain that these supplemental instructions are read and understood completely before installation is attempted. You should also refer to the Service/Owner Manual for additional installation instructions and safety precautions.
- Check contents of this kit and notify Ricon immediately of any missing parts. Claims for damages that have occurred during shipping must be made to the shipper.

TABLE OF CONTENTS	PAGE
I. INTRODUCTION	1
II. TOOLS REQUIRED.....	1
III. TAB, STOW-LOCK BLOCK RAMP INSTALLATION.....	2
IV. BLOCK REMOVAL AND INSTALLATION.....	3
A. BLOCK & HARDWARE REMOVAL.....	4
B. CATCH, BASE LATCH & HARDWARE INSTALLATION.....	4

I. INTRODUCTION

The purpose of this document is to outline step by step procedures for removal and installation of the Tab, Stow-Lock Block Ramp and the Catch, Base Latch, ensuring the mechanical integrity of the stow lock for the Ricon modular K & S Series wheelchair lifts.

- Under no circumstances is maintenance, repair, or adjustment of the product to be performed without the presence of an individual capable of giving aid.
- Give immediate attention to all injuries, and administer first-aid, or seek medical attention as necessary.
- Protective eye shields and clothing should be worn during maintenance, repair, and adjustment of the windows assembly.
- Work in a properly ventilated area.
- Check for hidden obstructions before drilling and cutting. Avoid interference with wiring, cables or any other vehicle components that may not be visible upon inspection.
- Read and understand all instructions before attempting to operate the product.
- Read and understand all instructions before attempting to perform maintenance, repairs, or adjustments to the product.
- Read and comply with warning labels attached to product.

II. TOOLS REQUIRED

- Hex set
- Drill/Driver with 10-24 UNC-2B Tap

III. TAB, STOW-LOCK BLOCK RAMP INSTALLATION

1. Refer to **FIG [1]**. Diagram shows where work below is to be performed.

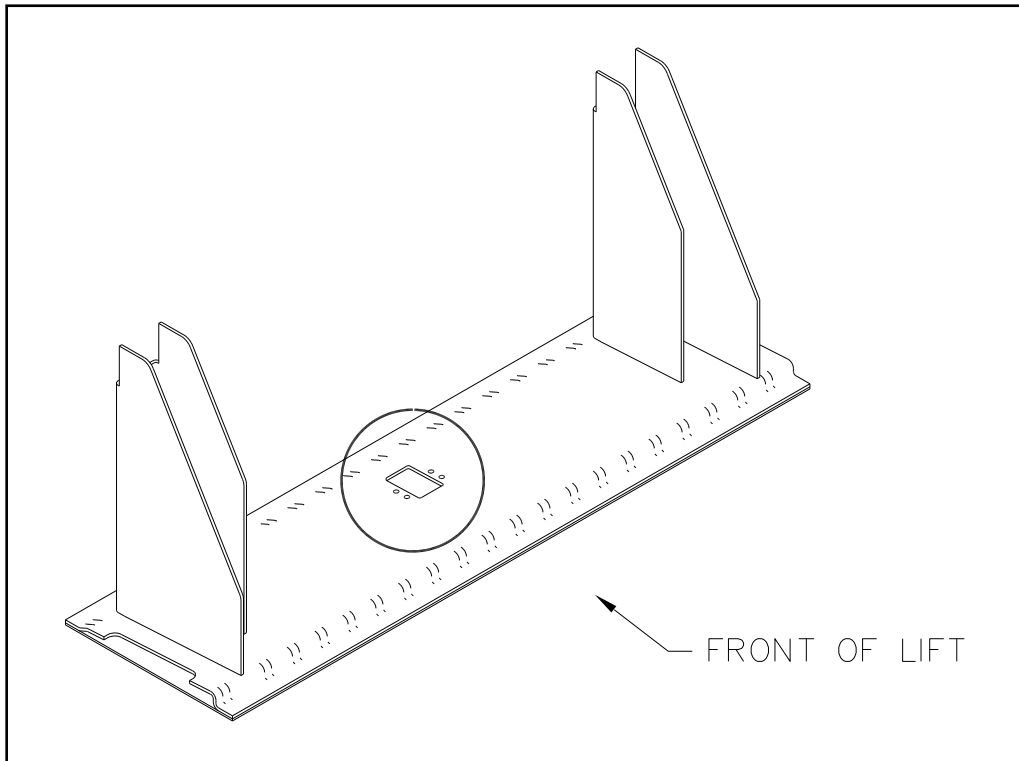


FIG [1]: STOW-LOCK CUTOUT LOCATION (DETAIL NOT SHOWN FOR CLARITY)

2. Refer to **FIG [2]**. Using Drill and 10-24 UNC-2B Tap tool, drill two holes in the locations shown in **FIG [2]**. **NOTE: ONLY DRILL THRU PLASTIC PIECE.**

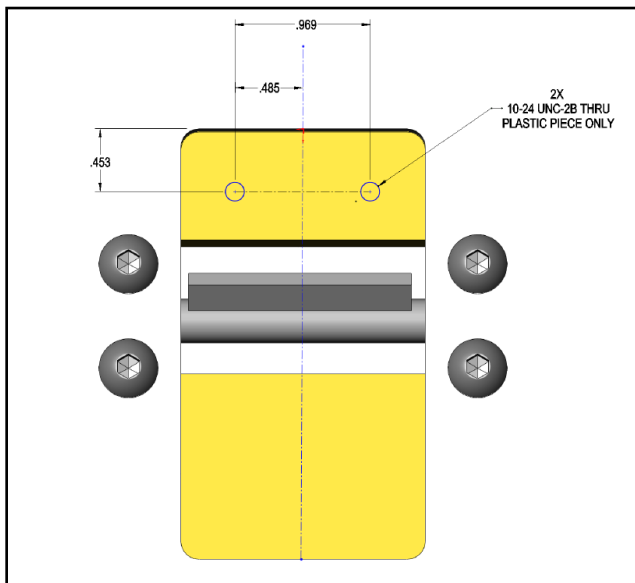


FIG [2]: DRILL HOLE(S) LOCATION DETAIL

3. Refer to **FIG [3]**. Install Tab, Stow-Lock Block Ramp using two flat-head hex screws, as shown.

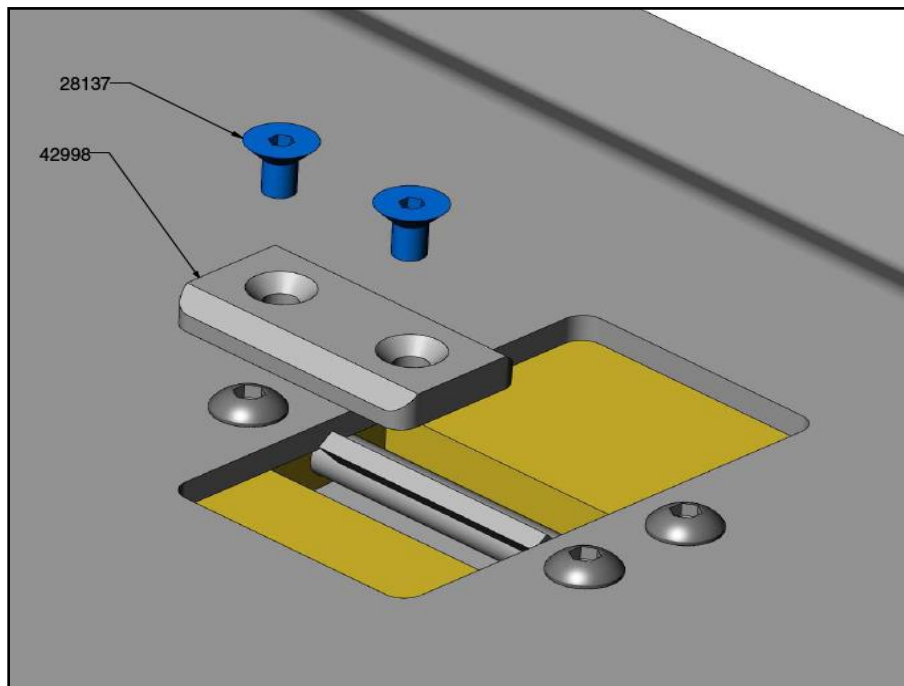


FIG [3]: INSTALLATION OF TAB, STOW-LOCK BLOCK RAMP

IV: TAB, STOW-LOCK BLOCK RAMP REMOVAL AND CATCH INSTALLATION

1. Refer to **FIG [4]**.

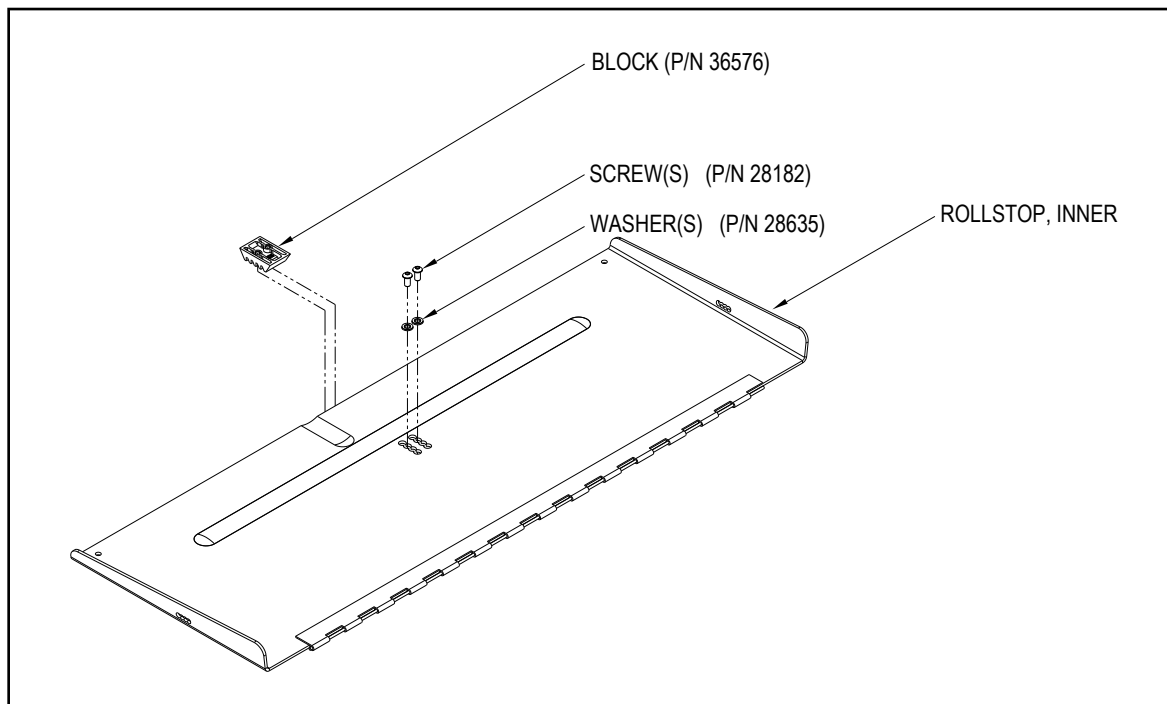


FIG [4]: BLOCK & HARDWARE DIAGRAM OF INNER ROLLSTOP OF LIFT PLATFORM

IV: TAB, STOW-LOCK BLOCK RAMP REMOVAL AND CATCH INSTALLATION (continued)**C. REMOVAL OF EXISTING BLOCK**

1. Remove existing Block (P/N 36576) and related hardware as shown in **FIG [4]**.

D. INSTALLATION OF CATCH

1. Install Catch, Base Latch in the same orientation as the old Block, using two (2) 5/16-18 x ½ black button-head socket screws supplied in kit.
2. Tighten as screws.
3. Test Lift by stowing to ensure Tab and Catch installation is correct. Adjust if necessary.