



**INSTALLATION INSTRUCTIONS
PCB ASSEMBLY KIT 45618**

- Be certain that these supplemental instructions are read and understood completely before installation is attempted. You should also refer to the Service/Owner Manual for additional installation instructions and safety precautions.

TABLE OF CONTENTS

PAGE

I. INTRODUCTION 1

II. PCB ASSEMBLY REMOVAL AND INSTALLATION 2

- Under no circumstances is maintenance, repair, or adjustment of the product to be performed without the presence of an individual capable of giving aid.
- This lift is driven with hydraulic pressure generated by a hydraulic pump system. The fluid is highly pressurized and possibly very hot. Use extreme caution when doing maintenance and repairs. DO NOT disconnect hoses or fittings when lift is in motion.
- Give immediate attention to all injuries, and administer first-aid, or seek medical attention as necessary.
- Protective eye shields and clothing should be worn during maintenance, repair, and adjustment of the lift.
- Work in a properly ventilated area.
- Check for hidden obstructions before drilling and cutting. Avoid interference with wiring, fuel tank, fuel lines, hydraulic lines, subfloor members, etc.
- Read and understand all instructions before attempting to operate the product.
- Read and understand all instructions before attempting to perform maintenance, repairs, or adjustments to the product.
- Read and comply with warning labels attached to lift.
- Refer to S&K-Series Service Manual for part numbers of replacement parts mentioned here.

I. INTRODUCTION

The purpose of this document is to outline the step by step procedure for the removal of existing PCB Assembly and installation of new PCB Assembly with Pump Solenoid Control PCB Kit (P/N 45618)

A. TOOLS REQUIRED

- Phillips Screwdriver
- Blue Loctite

II. REMOVAL OF EXISTING PCB ASSEMBLY

A. PCB REMOVAL

1. Power OFF wheelchair lift and remove battery power to the lift.
2. Remove any access panels necessary to access wheelchair lift pump chassis, where existing PCB is located.
3. Refer to **Figure 1**. Lift and pull the hydraulic pump cover upward and pull open to remove it off the pump chassis. Slip the control pendant through the pump cover opening to separate the cover from the pendant.



Figure 1. Remove Pump Cover

4. Tag and identify connections to existing PCB assembly. All connections to exiting PCB assembly will be removed to replace with new PCB assembly kit.
5. Refer to **Figure 2**. Unplug all terminals and receptacles off the existing PCB assembly.

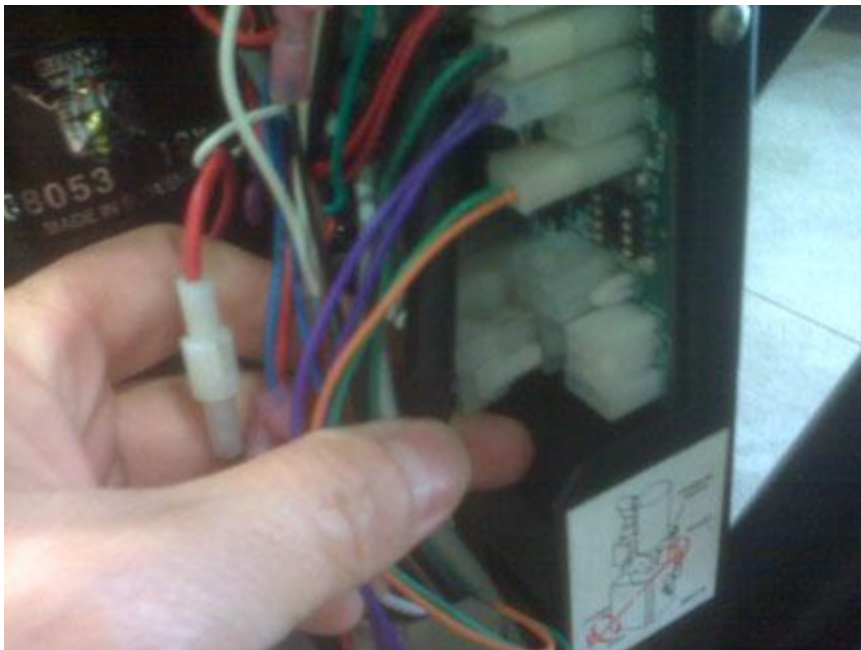


Figure 2. Unplug all PCB Terminals and Receptacles

6. Refer to **Figure 3**. Use a Phillip screw driver and remove two PCB assembly bracket screws. One located on the backside of pump chassis and the second screw is located on the side of pump chassis. Retain screws for installation.

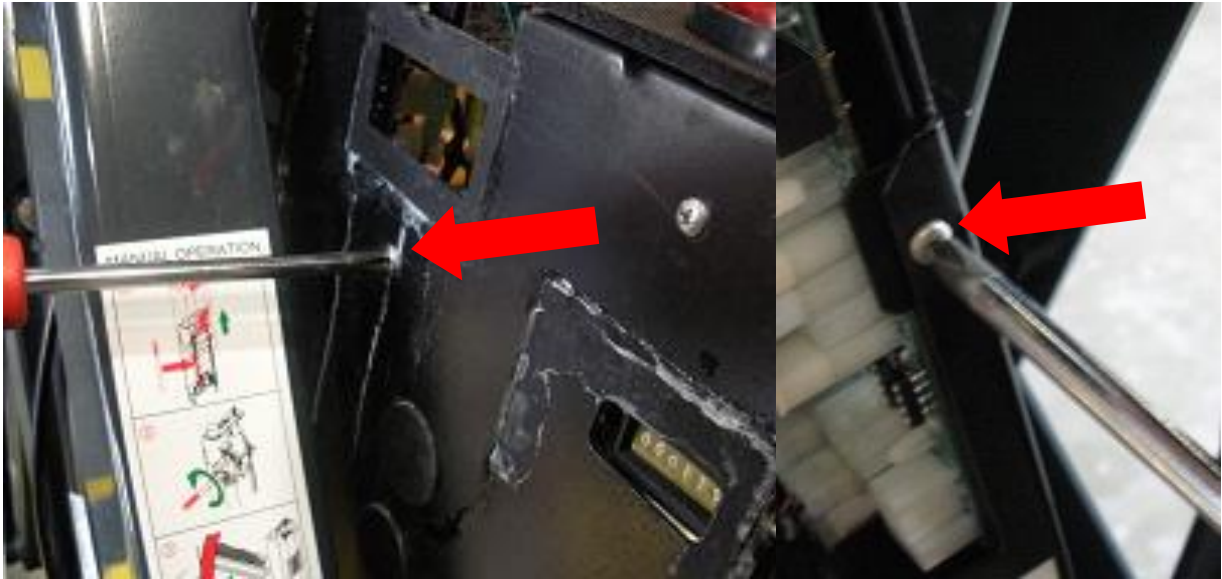


Figure 3. Remove PCB Assembly Bracket Screws

7. Refer to **Figure 4**. Remove PCB Assembly from pump chassis.

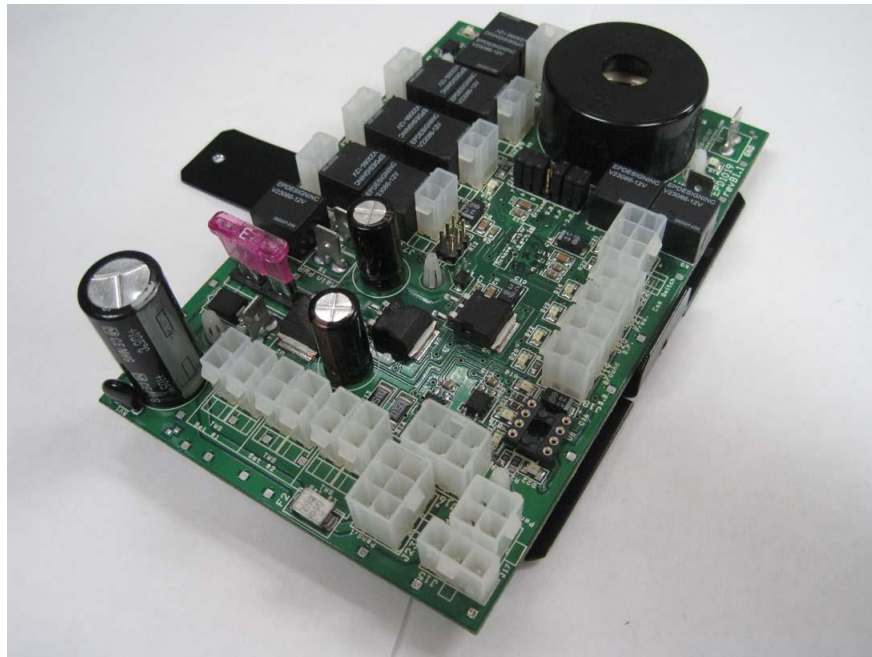


Figure 4. Remove PCB Assembly Bracket Screws

B. PCB ASSEMBLY KIT (P/N 45618) INSTALLATION

Installation of new PCB Assembly Kit (P/N 45618) contains Solenoid Pump Control PCBA and pre-loaded software. Installation of software is not required.

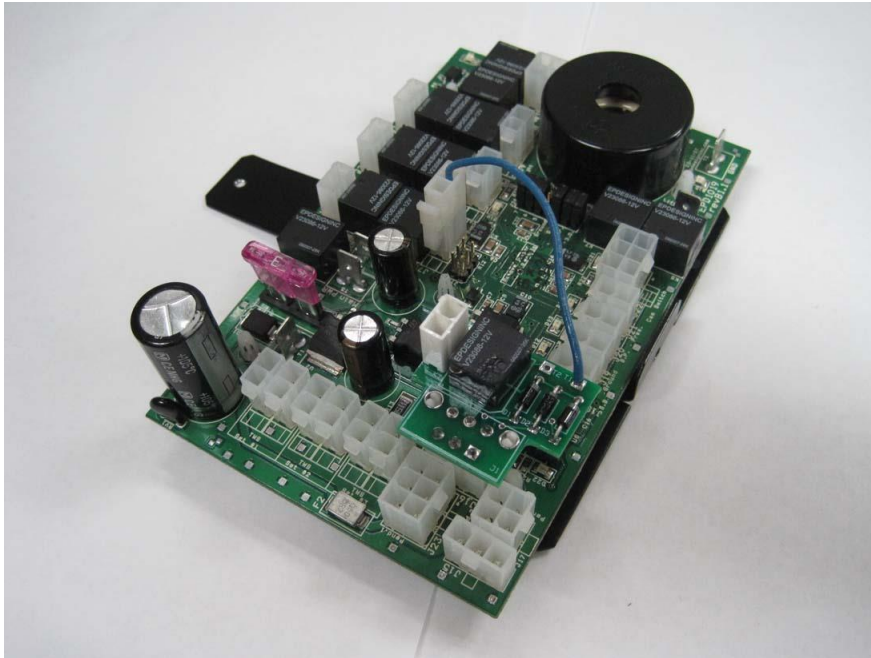


Figure 5. PCB Assembly Kit

1. Refer to **Figure 5**. Install new PCB Assembly Kit (P/N 45618) onto pump chassis.

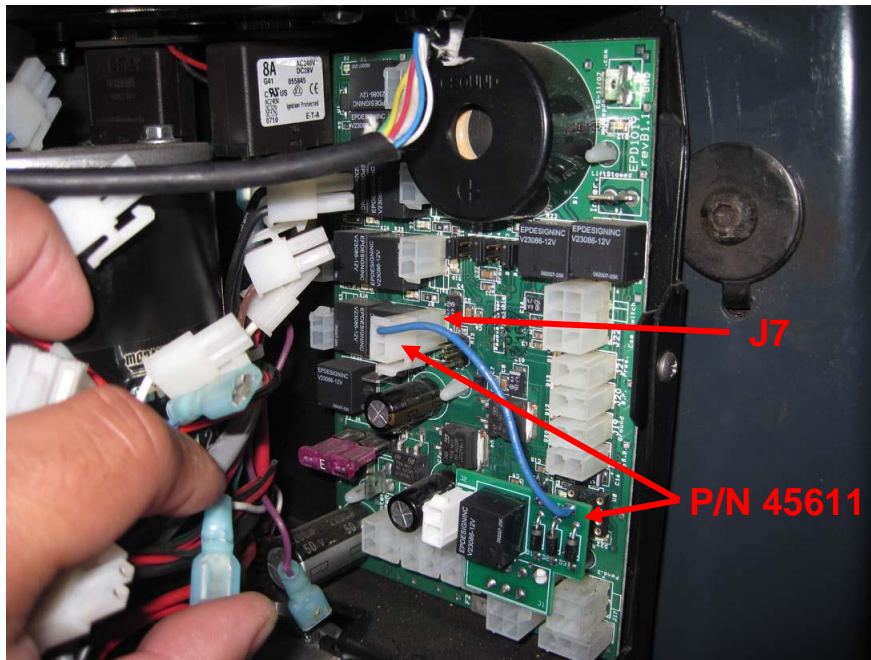


Figure 6. Install PCB Assembly onto Chassis

2. Refer to **Figure 6**. Reconnect terminals and receptacles onto PCB assembly.
NOTE: J7 Connection will be installed with Pump Solenoid Control PCB connector.
3. Refer to **Figure 7**. Install Pump Connector to J2 connection of Pump Solenoid Control PCB.

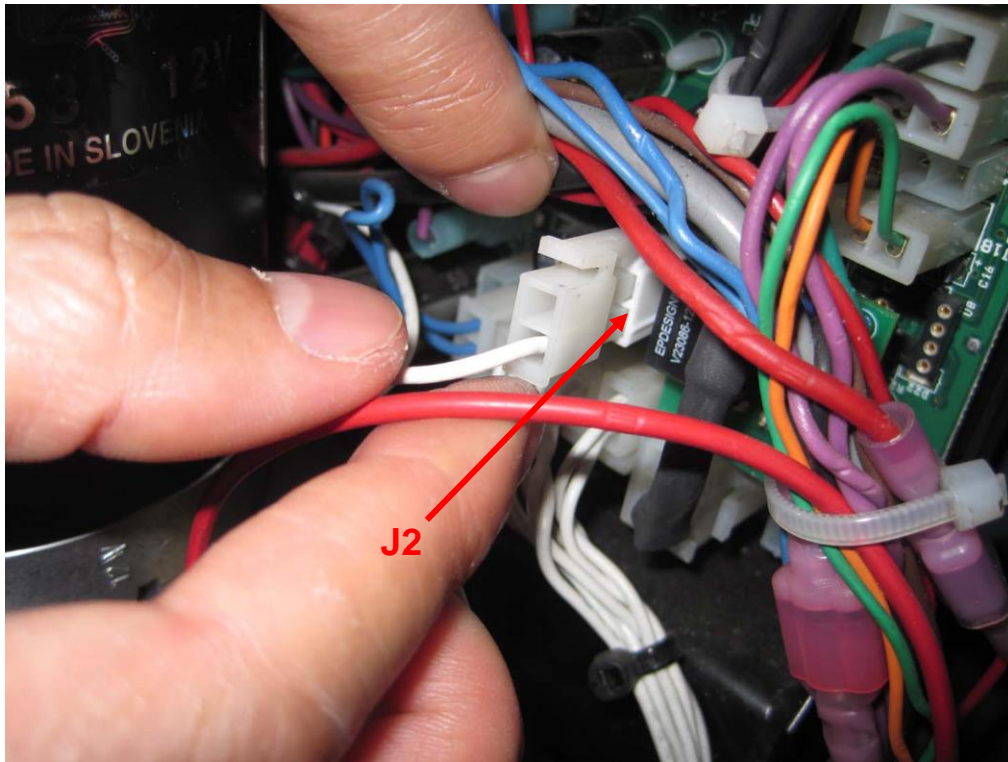


Figure 7: Install Pump Connector to J2 of PCBA

4. Apply power to lift then perform Platform Pressure Switch Check and Adjustment as defined in Service Manual 32DSKL02, Chapter 2 Platform Pressure Switch Check and Adjustment, to ensure that wheelchair lift is properly adjusted.
5. Re-install pump cover onto the pump assembly.
6. Perform at least five Stow and Deploy cycles to ensure that wheelchair lift is working properly.