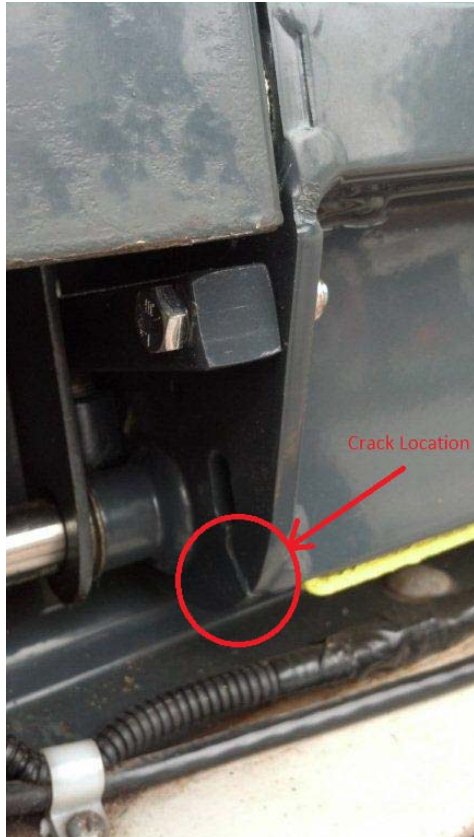


Cracked Platform Pivot Plate Example

Information

Under certain conditions the side plate of the larger platforms included on the subject S-Series model wheelchair lifts can exhibit cracking while in the stowed position which, if left unchecked can propagate to the point where separation of the rear portion of the side plate occurs rendering the lift inoperable and possibly unsafe to use.



Cause

The cracking as illustrated has been observed on less than 5% of the subject population and appears to be caused by a combination of factors including but not necessarily limited to, incomplete stowing of the lift and/or maladjustment or otherwise malfunctioning of the stow lock device combined with a violent side- to- side movement that might be associated with traversing curbs, speed bumps and other variable road conditions, especially at higher speeds.